



AZA ANTELOPE AND GIRAFFE TAG

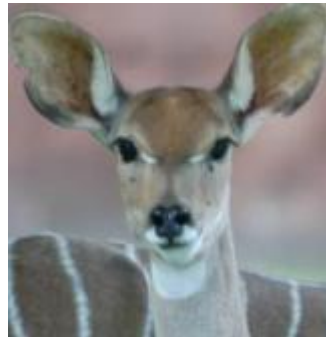
Midyear Update

AZA Midyear Workshop - Albuquerque

March 26, 2017



**ASSOCIATION
OF ZOOS &
AQUARIUMS**



THANK YOU! Retiring Vice-Chairs

Sharon Joseph

- 15+ years of leadership and mentorship to the TAG as VC
- Steering Committee service
- Wildebeest program leader

Jeff Holland

- 10+ years of leadership and mentorship to the TAG as VC
- Steering Committee service
- Black duiker program leader

Welcome! New Vice-Chairs

- Andi Kornak, VC
Forest Woodland
Antelope



- Steve Metzler, VC
Small Antelope



TAG leadership

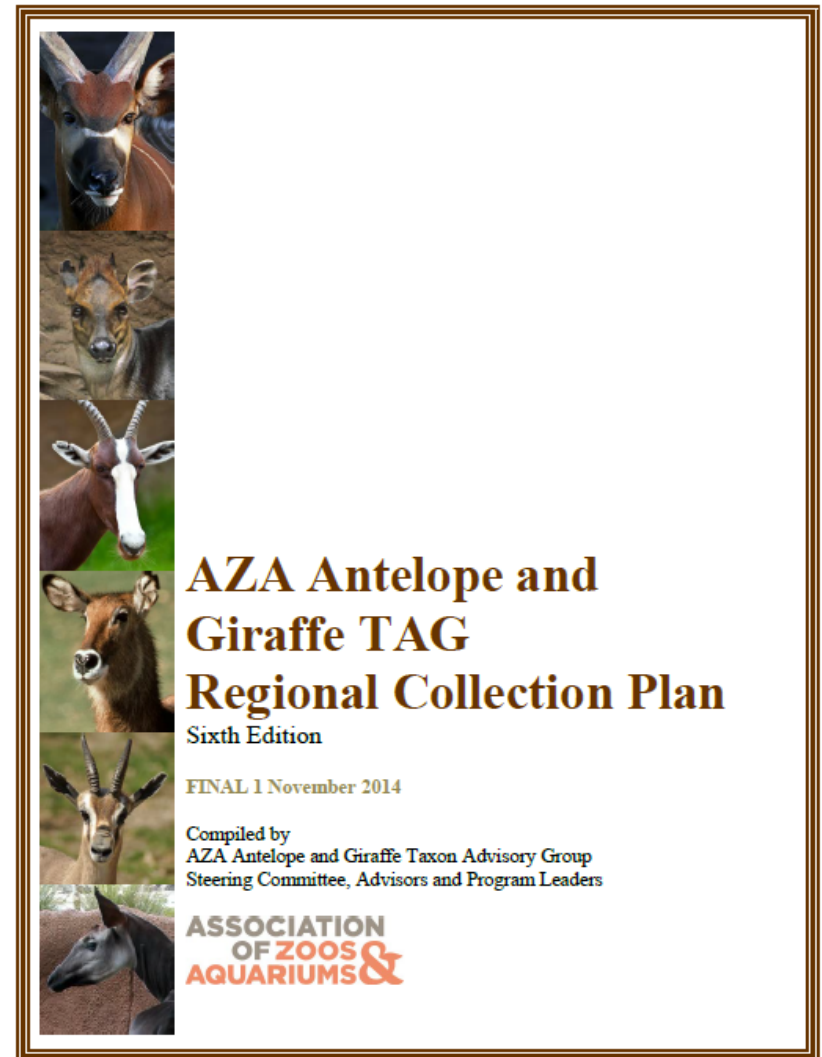


- Chair - Martha Fischer, Saint Louis Zoo
- Vice Chairs
 - Andi Kornak, Cleveland MetroParks Zoo, Vice-Chair, Forest/Woodland Antelope
 - Steve Metzler, SDZSP, Vice-Chair, Small Antelope
 - Dan Beetem, The Wilds, Vice-Chair, Hartebeest
 - Randy Rieches, SDZSP, Vice-Chair, Waterbuck
 - Adam Eyres, Fossil Rim, Vice-Chair, Aridland Antelope, Gazelle, Pronghorn
- Elected Committee
 - Tony Barthel, National Zoo
 - Sam Berner, Disney
 - Sheri Horiszny, Oregon Zoo
 - Andi Kornak, Cleveland Metroparks
 - Amy Phelps, Oakland Zoo
 - Amy Roberts, Brookfield Zoo
 - Lisa Smith, Great Plains Zoo, Secretary
 - Tracy Sorensen, Brevard Zoo
 - Tracy Thessing, Cheyenne Mtn
 - Terry Webb, Toledo Zoo

Regional Collection Plan



- 6th edition of the Regional Collection Plan was approved by WCMC in 2014
- 45 managed programs



	1995	1997	1999	2005	2009	2014	2017
SSP	3	6	10	8	8	--	--
PMP	42	42	36	33	31	--	--
DERP	--	11	2	8	11	--	--
Green SSP	--	--	--	--	--	1	1
Yellow SSP	--	--	--	--	--	25	26
Red SSP	--	--	--	--	--	11	10
Candidate	--	--	--	--	--	8	8
Studbooks					36	43	43
P/I (phase in)	--	--	0	1	0	0	0
P/O (phase out)	13	11	36	18	15	12	12
NPR (no program recommended)	--	--	--	--	--	2	2
ISF (<i>in situ</i> focus)	--	--	--	20	19	19	19

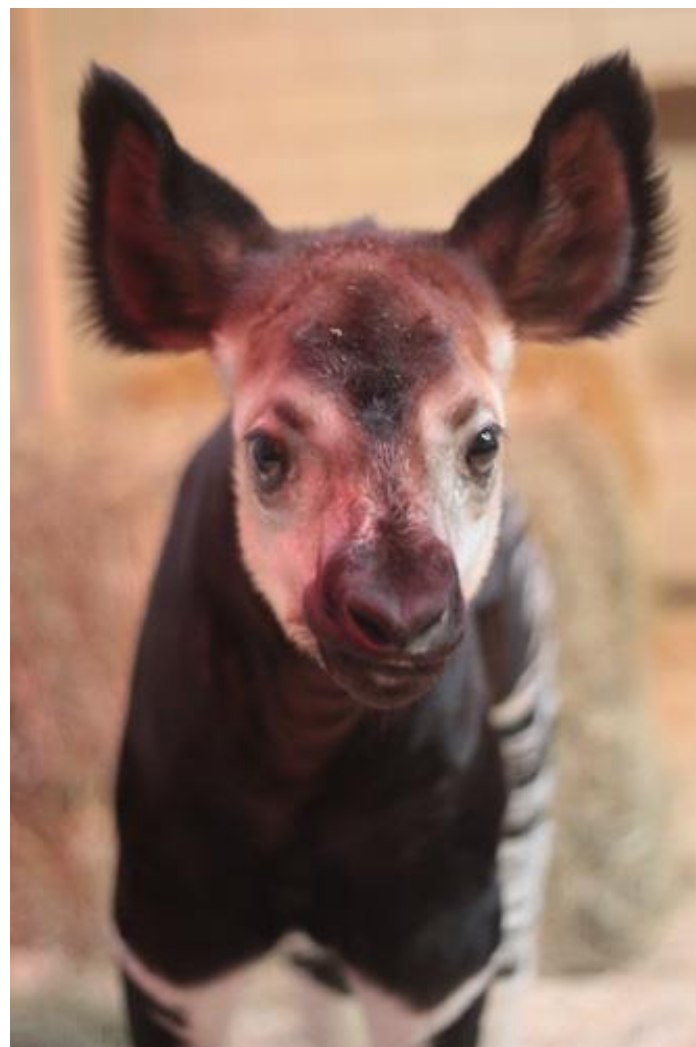


Program updates 2016-17

Completed in 2016-17

- 11 **Yellow** SSP Plans
- 4 **Red** Plans
- 1 **Candidate** Plan
- 11 NA Regional Studbooks
- 3 International Studbook
- **THANK YOU** Program
Leaders and PMC
Biologists and Adjuncts!

Available on www.aza.org



Program updates 2016-17



- Advertised & filled vacancies
- 4 studbooks
- 5 SSPs
- Vacancies posted on AZA website and announced on AZAUngulates listserv



Program leader changes 2016-17



- Black Duiker Studbook and Red SSP – Josh Sisk, Los Angeles Zoo
- Generic Giraffe Green SSP – Sheri Horiszny, Oregon Zoo
- Impala Yellow SSP – Terry Webb, Toledo Zoo
- Red-fronted Gazelle Studbook – Charlie Hyde, San Diego Zoo Global
- Scimitar-horned Oryx Yellow SSP – RoxAnna Breitigan, Living Desert
- Soemmerring's Gazelle Studbook and Red SSP – Nicole Becker, Saint Louis Zoo
- Thomson's Gazelle Studbook and Yellow SSP – Matt Gelvin, San Diego Zoo Global



Ungulate TAG Species Profiles



- Thank you to the 39 program leaders who have completed a profile for their species!
- And thanks to the Ungulate TAG Marketing team who have made these profiles possible
- Available on AZAUngulates website



Why exhibit Speke's gazelles?

- Provide urgently-needed *ex situ* support for this IUCN Antelope Specialist Group priority species. Wild numbers have dropped by 50% since 1988.
- Astonish visitors with this gazelle's unique inflatable nasal sac, which amplifies the honk-like alarm call and imparts an extraordinary look.
- Add activity and interest to savanna exhibits at your zoo: as one of the smallest gazelles, this species fits easily into multi-species exhibits.
- Use this species to narrate conservation issues in deserts and savannas, with themes including over-exploitation of wildlife and overgrazing.
- Get some instant curb appeal! Herds are active throughout the day, and the small body stature of adults immediately registers as 'cute' with visitors. The tiny calves are especially endearing!

Get involved with stewardship!

Saint Louis Zoo WildCare Institute:
Horn of Africa Conservation Center
<http://www.slzoo.org/conservation/wildcare-institute/conservationinthehornofafrica/>

Care and Husbandry

YELLOW SSP: 24.42 (86) in 11 AZA institutions (2014)
Species coordinator: Christy Poelker, Saint Louis Zoo
poelker@slzoo.org; (314) 646-4651

Social nature: Family herds with one male and several females. Offspring should be separated at one year of age. Bachelor herds are possible with young males, but former breeding males often need to be kept singly.

Mixed species: Large and small ungulates (rhinos, giraffes, other antelope) and various birds. Adequate space is needed to alleviate conflicts.

Housing: Tolerant of high temperatures, but can withstand cool, sunny weather (to 45°F). Indoor housing with heat (60-70°F) needed in cold climates. Can be housed in groups in large stalls if visual barriers are provided.

Medical notes: Manual restraint is the best method of handling; anesthesia can be challenging in this species.

Special requirements: Dominance interactions require multiple sources of food and water.

Keeper resources: Group housing simplifies daily care. Keepers must be patient

MEASUREMENTS
Length: 3 feet
Height: 2 feet at shoulder
Weight: 25-30 lbs

Arid grassland

Horn of Africa

IUCN ENDANGERED
< 10,000? In the wild









AZA Sustainability Database



- Available on AZA website
- Quantitative info from Breeding and Transfer Plans, Population Viability Analyses, etc., with qualitative info on husbandry, exhibit design, etc.
- Updated each time a masterplan is completed

**ASSOCIATION
OF ZOOS &
AQUARIUMS**



- Giraffe SMSS – 3:15-5 Monday



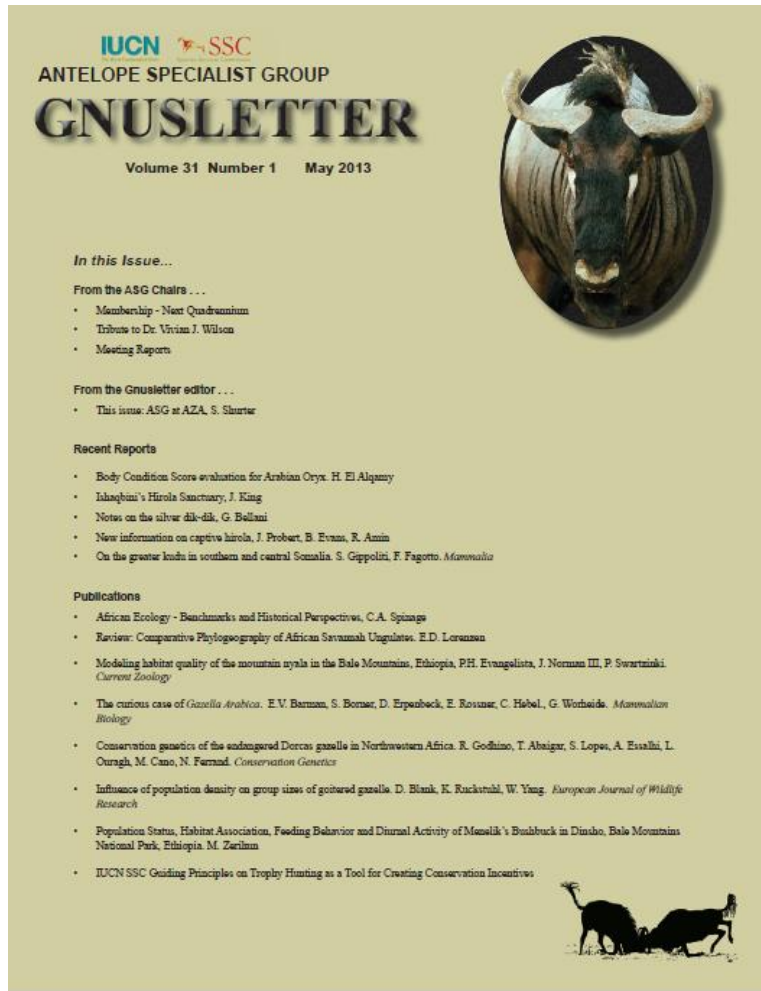
Reports from the Field



- Sunday 1-2:45 pm
 - Okapi Conservation Project – John Lukas
 - Scimitar-horned Oryx Reintroduction



Antelope Specialist Group



- To download, go to www.iucn.org



Thank you!

