



**GLOBAL  
WILDLIFE  
CONSERVATION**

# **NICARAGUA TAPIR PROJECT AND THE TSG**

**Christopher Jordan**

Nicaragua Program Director

# NICARAGUA



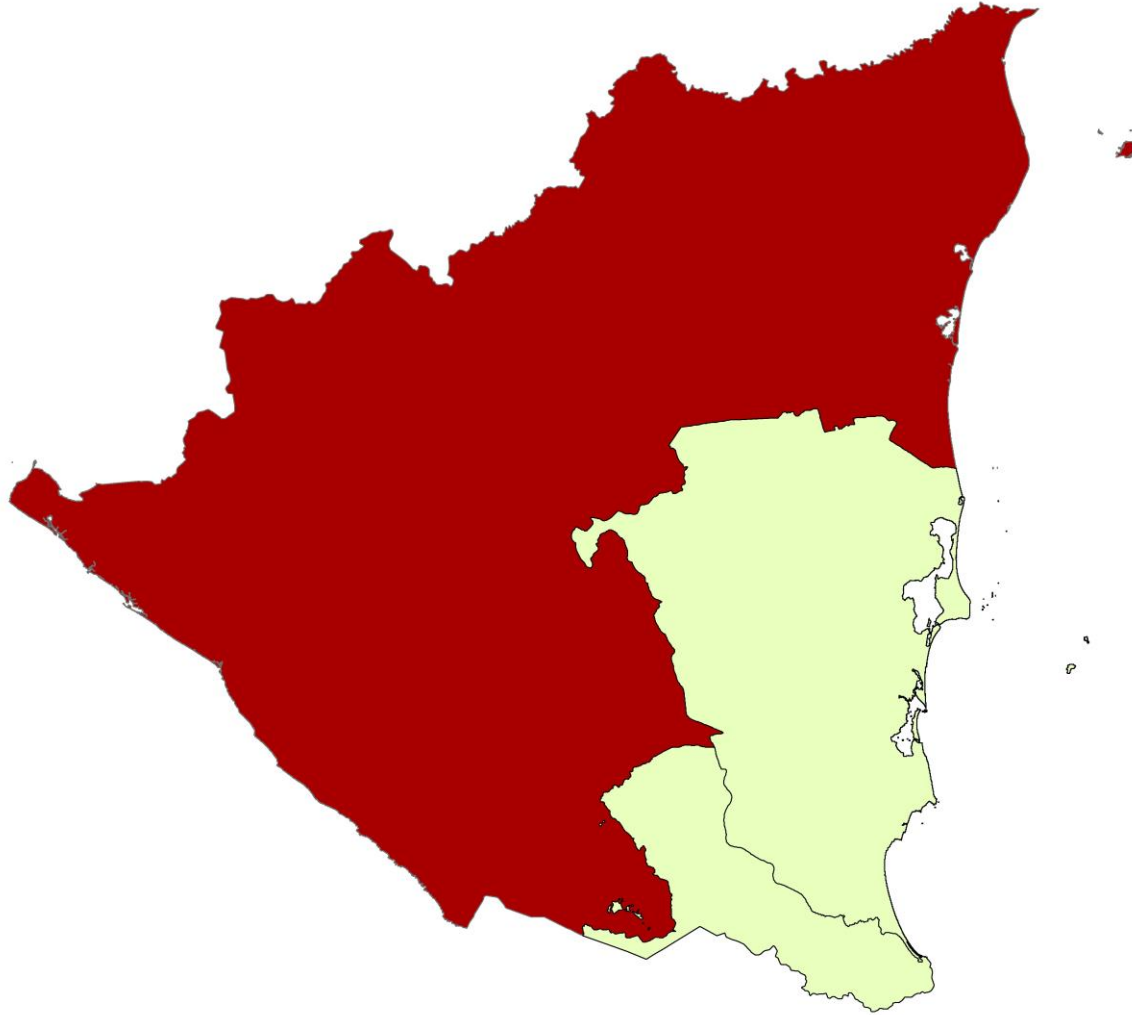
# IUCN Tapir Range Map



# Updated Tapir Range Map



# NICARAGUA TAPIR PROJECT



GLOBAL  
WILDLIFE  
CONSERVATION



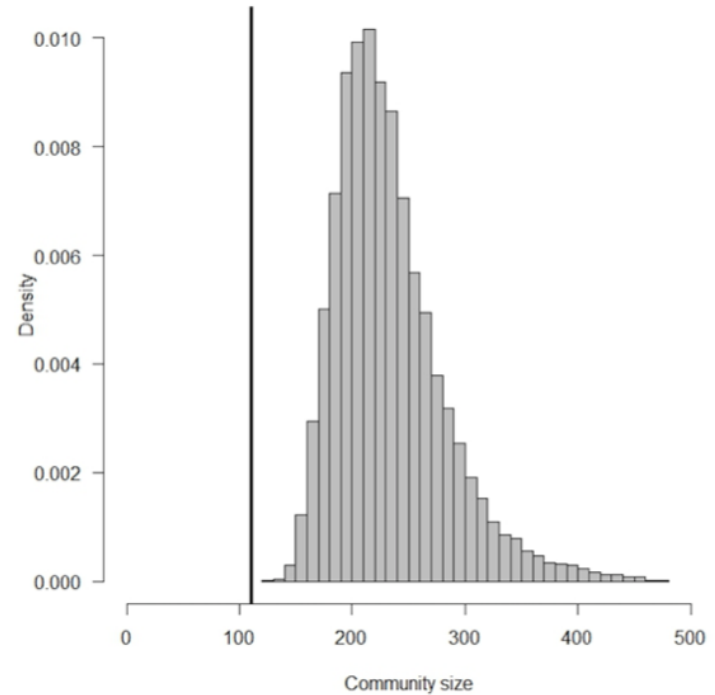
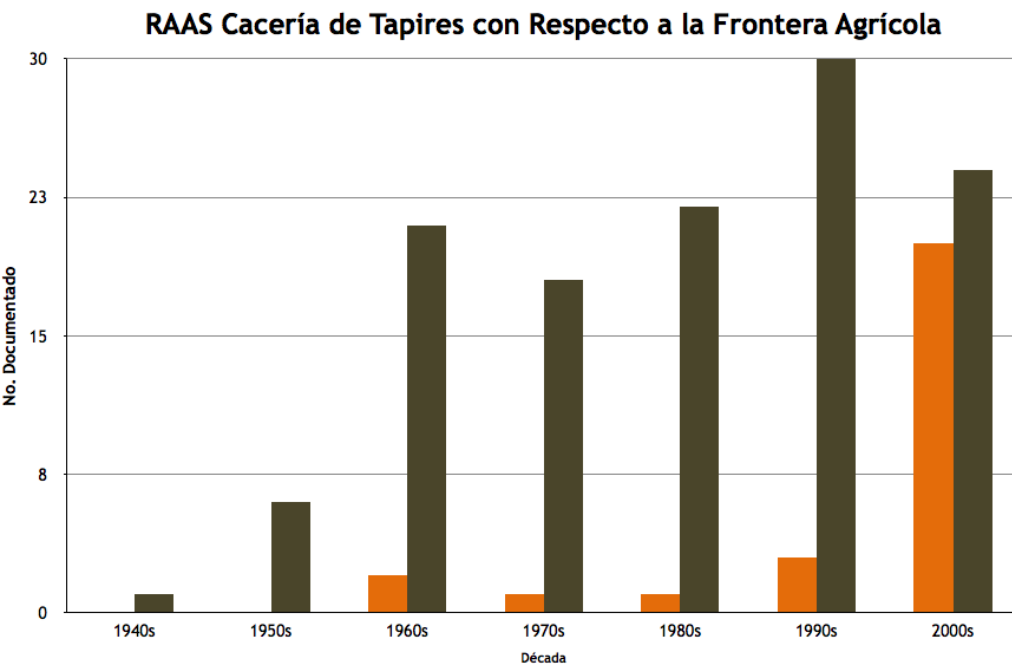








# RESEARCH



Jordan et al. 2014. La cacería histórica de tapires centroamericanos en la RAAS, Nicaragua. Estudios Ambientales. 1(1)

Ruiz-Galeano, M. and C. Jordan. 2014. Diet diversity and feeding behavior of a semi-captive Baird's tapir (*Tapirus bairdii*) in Wawashang, Nicaragua. Poster: International Tapir Symposium. Campo Grande, Brazil.



**GLOBAL  
WILDLIFE  
CONSERVATION**





MOULTRIE



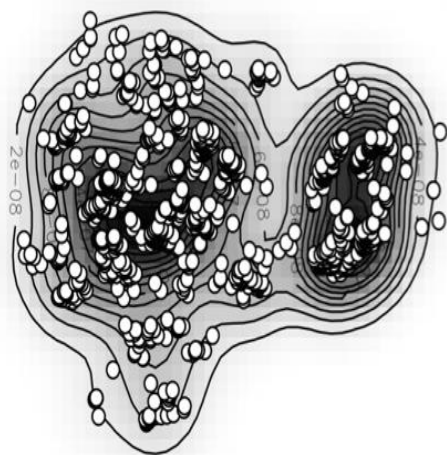
65°F



12/09/2014 08:16PM LOULTRIECA2







~8-10 sq km. Home range



An aerial photograph of a dense tropical forest. A large, irregularly shaped area in the center of the image has been cleared, revealing a lighter green, grassy or shrubby ground. The surrounding forest is a deep, lush green, with many tall trees visible. The cleared area appears to be a significant loss of primary forest.

RACCS: 339,879 hectares of forest lost 2001-2014

The RACCS and the RACCN lost ~40% of their core areas of primary forest during this same interval

Since 2014, Nicaragua has lost approximately 133,000 hectares of forest a year. If this continues, tapirs will not survive in viable numbers. If our objective is to ensure the survival of tapirs, we needed to address this.



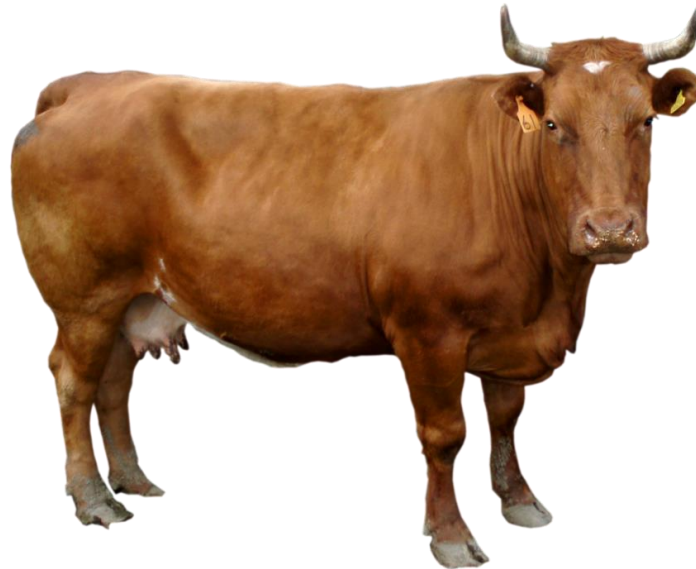
An aerial photograph of a vast tropical rainforest. The forest is a dense, dark green canopy. Puffs of white mist or low clouds are rising from the forest floor, creating a textured, ethereal effect. In the background, rolling hills or mountains are visible under a sky filled with large, dramatic clouds. The sun is breaking through the clouds on the right side, casting a warm, golden light across the scene.

# CONSERVATION

# Causes of massive forest loss...

**1) Central Government  
inaction**

**2)**





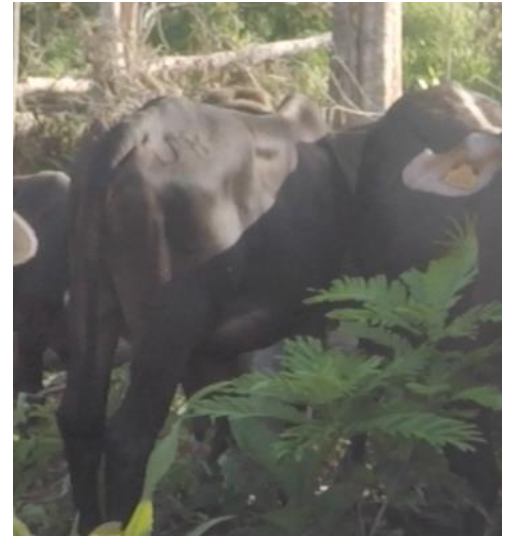
# Confronting Government Inaction

- 1) Strong autonomy laws in Nicaragua
- 2) Indigenous ranger program, building ranger stations
- 3) Indigenous protected area management system, demarcating boundaries, signage
- 4) Results in unilateral action by our indigenous partners – Applying sanctions



# Confronting Cattle Ranching

- 1) Private sector engagement
- 2) Realistic proposals for resolving problem – find win-win proposals
- 3) Understand the expansion of cattle ranching (supply chain, where the \$\$\$ comes from, where the cattle are exported to)
- 4) Cattle communications and confronting companies (foreign and national) with this information.
- 5) Legal actions against encroachment (cattle, squatters, and illegal timber extraction)







NATIONAL GEOGRAPHIC

CONFIDENCIAL 20 AÑOS



Google Búsqueda personalizada



Archivo

Suscríbese a nuestro boletín

Indígenas cuestionan permisividad de Marena y Ejército

# Pastora extrae madera de Reserva Indio Maíz



Deuda con Costa Rica-PxMolina



Edén Pastora: "Soy un soldado, cumplí órdenes"



Más en Nación

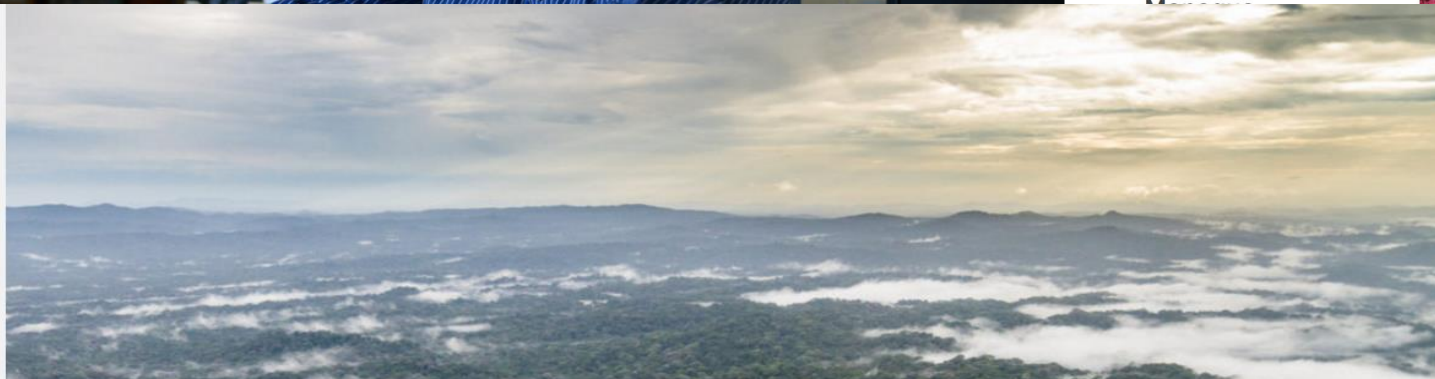
"Una nomenclatura racional y simple para Managua"



Nicaragua: 16,400 niñas violadas en una década



El Cavaradossi de



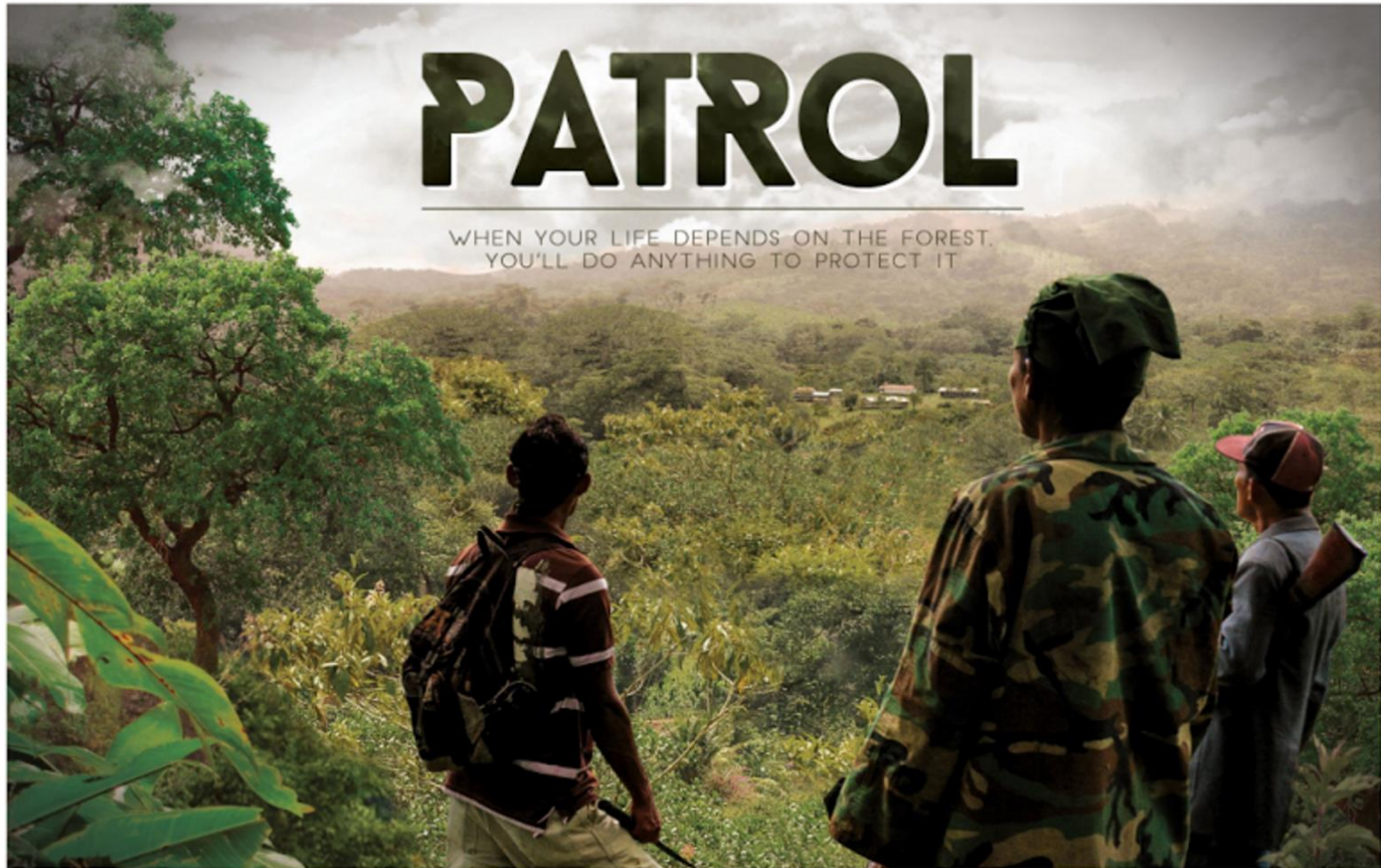
# Communications – TedX Managua



**GLOBAL  
WILDLIFE  
CONSERVATION**

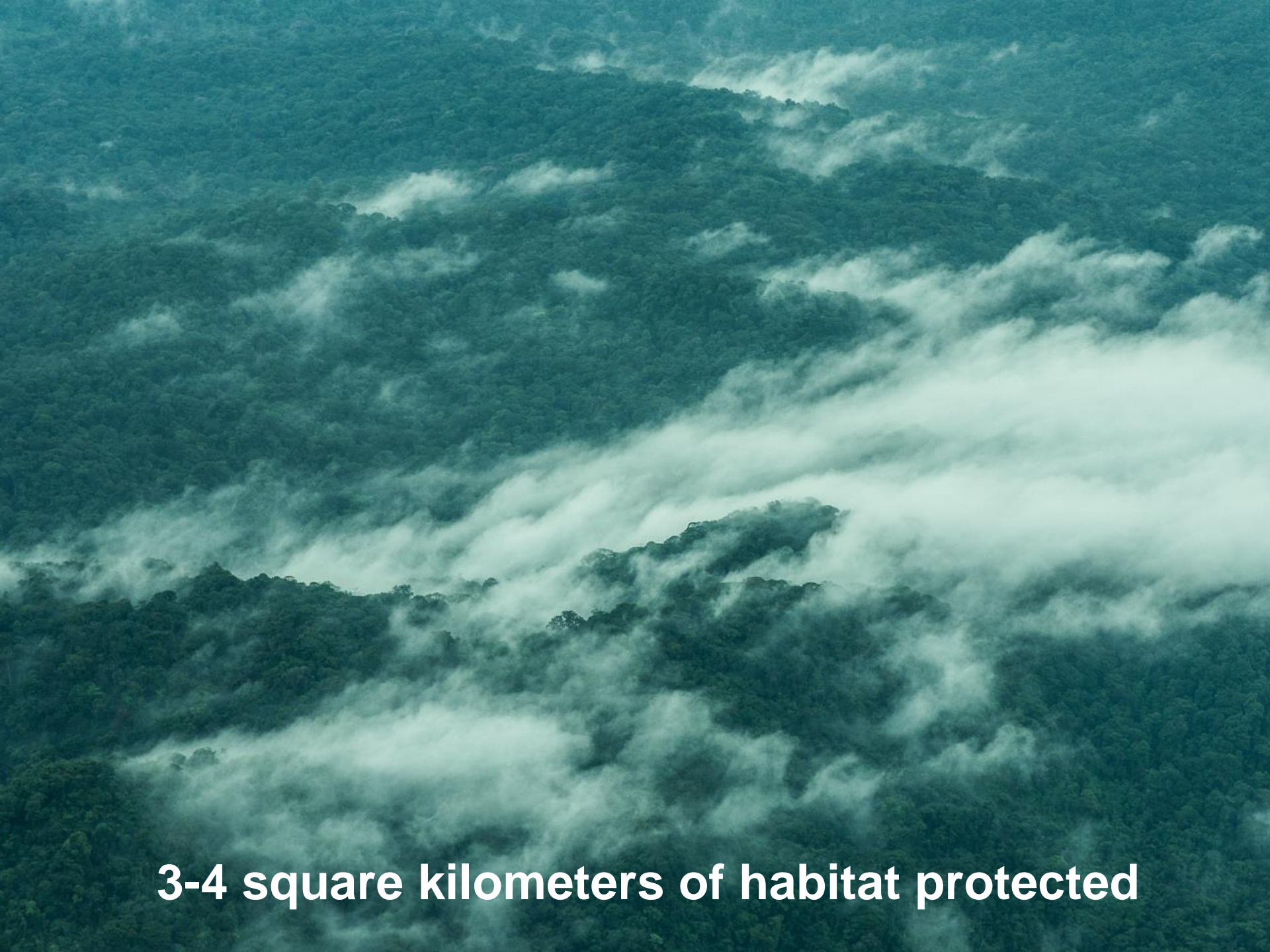


# COMMUNICATIONS (2017-2018)



GLOBAL  
WILDLIFE  
CONSERVATION





**3-4 square kilometers of habitat protected**



# Baird's Tapir Global Status – Are we doing enough as the TSG to ensure this species survives?



# Regional Hubs for Tapir Researchers and Conservationists



Training in Brazil for Vet and Field Assistant





# Regional Hubs for Tapir Researchers and Conservationists



© Nick Hawkins



**GLOBAL  
WILDLIFE  
CONSERVATION**

# Joint Applied Programs



- Co-coordinating World Tapir Conservation Programme – Includes tapir projects in Guatemala, Nicaragua, Colombia, Brazil, and Indonesia





# Brazil



- Cerrado Program understanding spatial ecology and mitigating the threat of highways/automobiles.



# Guatemala



- Camera trapping and ranger work to directly address threats (fires, deforestation) in the Petén.





# Colombia



Partners for  
Conservation

FONDATION SEGRÉ

- Camera trapping to understand the potential threats of post peace treaty land policies.



GLOBAL  
WILDLIFE  
CONSERVATION

# Indonesia



- Understanding spatial ecology in and around palm plantations and using those data to engage plantation owners to protect tapirs.





# Nicaragua



FONDATION SEGRÉ

Partners for  
Conservation



GLOBAL  
WILDLIFE  
CONSERVATION

# Range-wide Species Programs!



- Baird's Tapir Survival Initiative: Helping to develop stable tapir conservation programs in Honduras, Panama, and Costa Rica to complement Guatemala and Nicaragua. Includes capacity building and specific, strategic conservation planning.







Reserva Biológica Indio Maiz  
La compra y venta de nuestros  
Recursos Naturales es  
**ILEGAL. <Ley 445>**  
GOBIERNO TERRITORIAL RAMA Y KRIOL

**Gracias!**  
**[cjordan@globalwildlife.org](mailto:cjordan@globalwildlife.org)**