



SOURCE POPULATION
ALLIANCE



CONSERVATION CENTERS
FOR SPECIES SURVIVAL



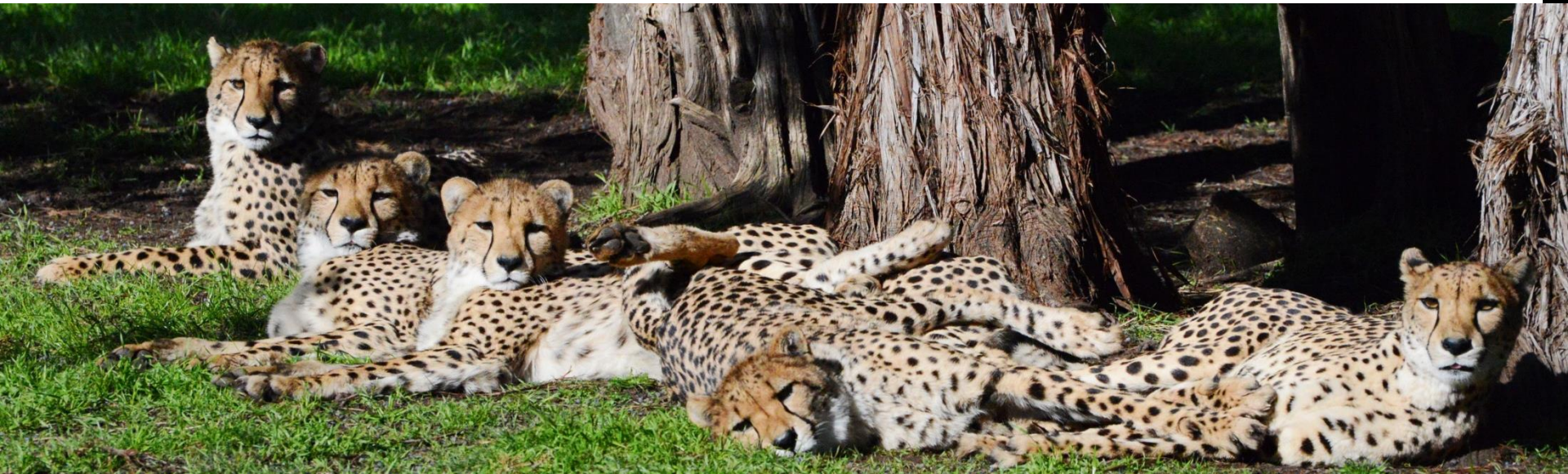
SOURCE POPULATION ALLIANCE UPDATE 2017

KATY PALFREY
CEO, C2S2



CONSERVATION CENTERS
FOR SPECIES SURVIVAL

Building wildlife assurance populations
for the survival of species



GROW

OPTIMIZE

RETURN



SOURCE POPULATION ALLIANCE (SPA)

Source Population

- A sustainable population of wildlife that serves as a dependable reservoir for *ex situ* (captive) and *in situ* (wild) conservation and utilization.

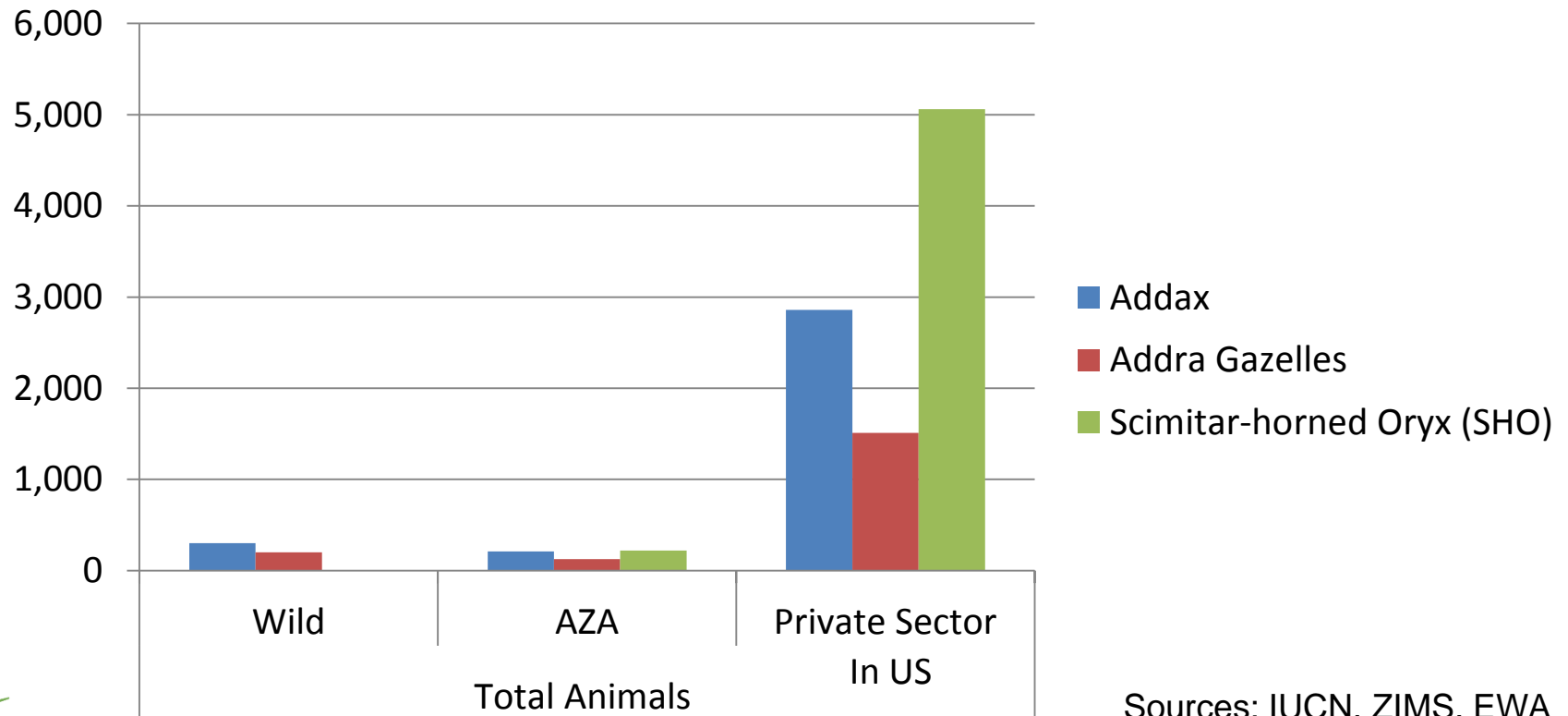
Mission

- Create and preserve sustainable wildlife populations long term using a combined private/public sector alliance.



ESTIMATED CURRENT POPULATIONS

Great capacity & potential in the private sector



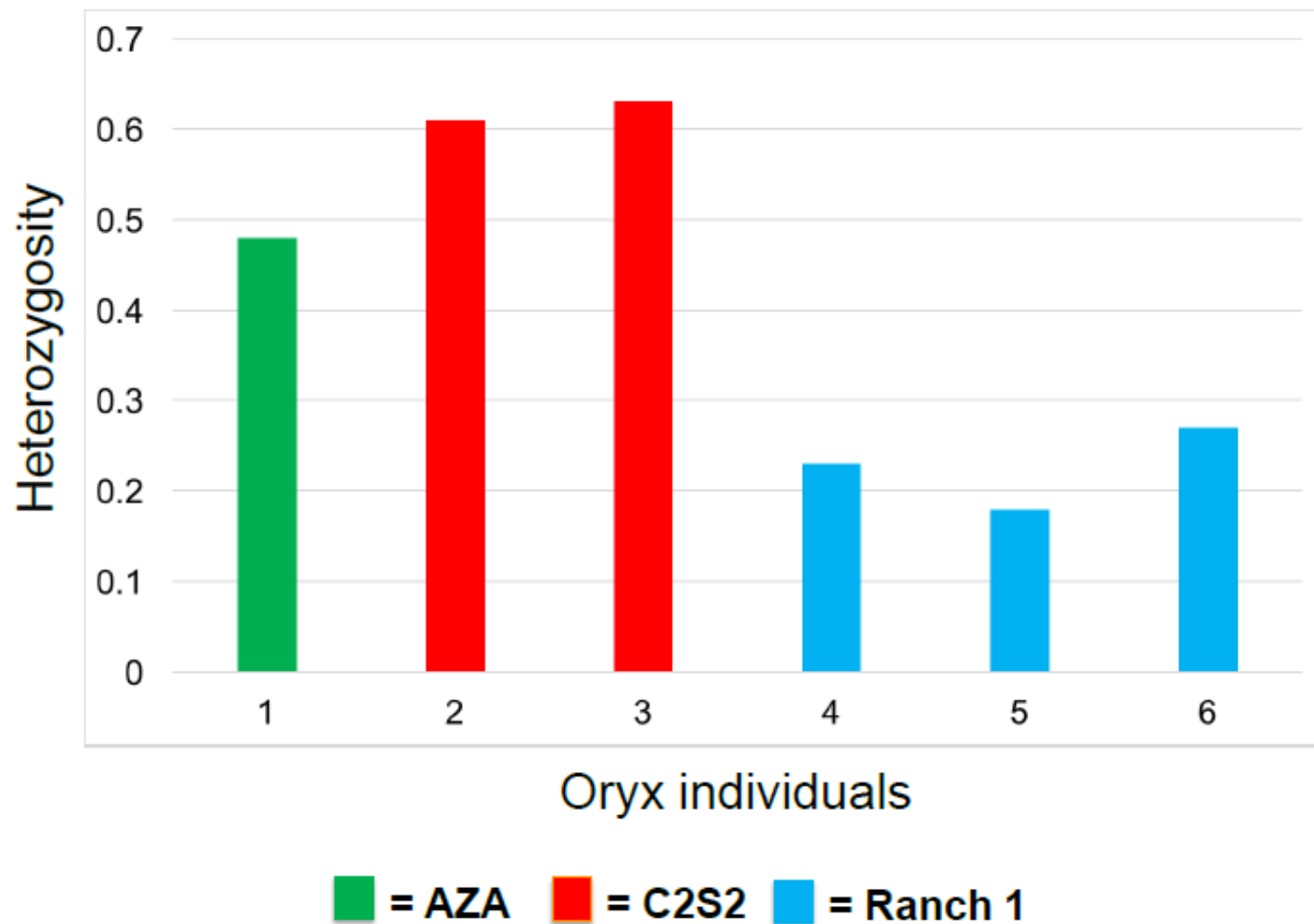
Sources: IUCN, ZIMS, EWA



Program Achievements in 2016

- Branded the program
- Phil Miller, Senior Program Manager at Conservation Breeding Specialist Group (CBSG), working on population modelling for big herds
- Proof of Concept Genomics Assessments determine low and high diversity herds
- Grew the herds through new members and increased designations (65% increase in animals and membership #'s over 2.5 years)
- Designed Economics Study
- Secured \$100K for 2017 from Mark Paul Terk Charitable Trust
- Minimum Viable Product developed of animal registry, which will incorporate genomics data (Match.com for antelope)
- Contributed to Sahara Conservation Fund and initiated conversations re: Addax releases

GGP-HD Bovine 150k Bead Chip – Scimitar-horned oryx



GENOMICS SERVICES

ASSESSMENT		RESULT	REQUIREMENT(S) FOR ASSESSMENT
1	GENETIC VARIABILITY	Determines the genetic richness of the herd relative to the general population	Samples from 20%-50% of animals in herd
2	PATERNITY/ KINSHIP	Estimates relatedness among individuals in herd & meta-population	Consultation with the SPA geneticists to discuss management history of the population
3	INCIDENCE OF HYBRIDIZATION	Identifies hybrid individuals that reduce the genetic value for the herd and species	Samples from all animals suspected of hybridization, including parents and offspring. Fewer required if pedigree history available.

Total Cost for Assessments 1-3

\$150 per sample

Actions in 2017

- Hiring Source Population Alliance Program Manager
- Increasing data and genomic sample collection
- Rolling out economics study
- Developing Animal health assessment study
- Conducting Feasibility Analysis of private landowner services
- Testing genomics hypotheses
- Developing MOU with Sahara Conservation Fund for Addax releases
- Expanding membership – reach out to me if interested
kpalfrey@conservationcenters.org

Questions?

