

2017 Midyear Meeting Program Updates

AZA Antelope and Giraffe TAG

Chair, Martha Fischer, fischer@stlzoo.org



Forest Woodland Subgroup

Vice Chair, Andi Kornak,

amk@clevelandmetroparks.com



Common/Cape Eland 2017

- 68.123.6 (197) in 25 AZA institutions
- 142.211.21 (374) in North America
- Yellow SSP - Zoo population - Stable
- Least Concern – Wild population - Stable
- Challenges that adversely affect program:
 - Unknown pedigree
 - # of neutered males
 - Response rate for surveys / lack of communication from non-AZA holders
- What TAG can do to help program & improve sustainability?
 - Contact program leader with studbook updates / wants and needs



- Program Leader
 - Lou Keeley
 - Blank Park Zoo
 - llkeeley@blankparkzoo.net
 - 515-974-2504

Eastern bongo

- 46.84 (130) in 38 institutions
- Yellow SSP – zoo population stable
- Critically Endangered – wild population ↓
 - Information coming out of Kenya estimates less than 100 Eastern bongo in the wild
- Challenges that affect program
 - Need breeding age males
 - Need new holders
- What can TAG do to help program & improve sustainability?
 - Holding institutions identify qualified privates near them that can work with bongo



Program Leader

- Ron Surratt
- Fort Worth Zoo
- rsurratt@fortworthzoo.org
- 817.759.7160

Eastern giant eland 2017

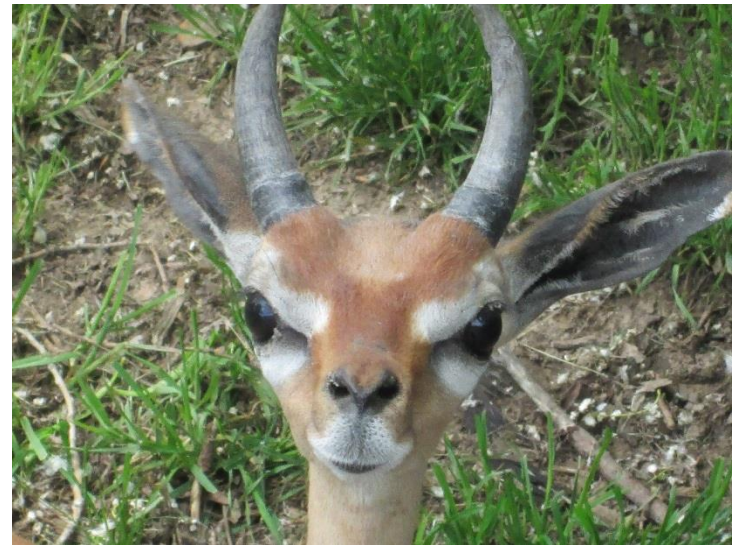
- 30.36 (66) in 4 NA institutions and 3 Int. institutions.
- No AZA program. International studbook
- zoo population ↑
- Least Concern - wild population ↓
- Challenges that adversely affect program:
 - Importation necessary to improve genetic viability.
 - Nutritional/veterinary issues.
 - Lack of space-more holders needed.
 - Difficult to manage this as an AZA program due to ownership politics. The majority shareholder makes all of the final decisions & recommendations. This is the cause of many institutions leaving the program.
- What can the TAG do to help the program & improve sustainability?
 - Help broker working relationships between participating institutions.



- Program Leader
- Lissa McCaffree
- San Diego Zoo Safari Park
- lmccaffree@sandiegozoo.org
- 760-492-4486

Southern Gerenuk 2017

- 37.47(84) in 16 institutions
- Yellow SSP - zoo population, stable
- Near Threatened-wild population ↓
- Challenges that adversely affect program:
 - Loss of holders
 - Untimely death of young animals
- What TAG can do to help program & improve sustainability?
 - Help bring in more genetics
 - Support AI research



- Program Leaders
- Christina Seely-SSP Coordinator/Studbook
 - Denver Zoo
 - Cseely@DenverZoo.org
 - 720-337-1669
- Manda Butler– Vice Coordinator
 - Cameron Park
 - mandab@ci.waco.tx.us
 - (254) 750-8435

Greater Kudu 2017

- 82.195.1 (278) in 41 institutions
- Yellow SSP - zoo population stable
 - several institutions held off 2016 breeding
- IUCN status – Least Concern (population stable)
- Challenges that adversely affect program:
 - Low % known genetics in population
 - Lack of sexually mature males
- What TAG or Institutions can do to help program & improve sustainability?
 - Promote studies that focus on developing DNA testing for population planning purposes
 - Continue dialogue with both AZA and non-AZA holders regarding benefits of SSP participation



*Photo Credit – Cassy Mock, Naples Zoo

- Denny Charlton – SSP Coordinator/Studbook Keeper
 - Smithsonian National Zoo
 - charltond@si.edu
 - 301-278-2069
- Scotty Stainback – SSP Vice-Coordinator
 - Caldwell Zoo
 - sstainback@caldwellzoo.org
 - 718-220-5162

Mountain Nyala 2017

- Not managed in zoos
- ISF –*in situ* Focus program
- Endangered –wild population ↓
- Challenges that affect wild population:
 - Habitat destruction/over-grazing
 - Competition with livestock and humans
- What TAG or Institutions can do to help program & improve sustainability?
 - Encourage AZA institutions to support mountain nyala conservation and education programs in Ethiopia

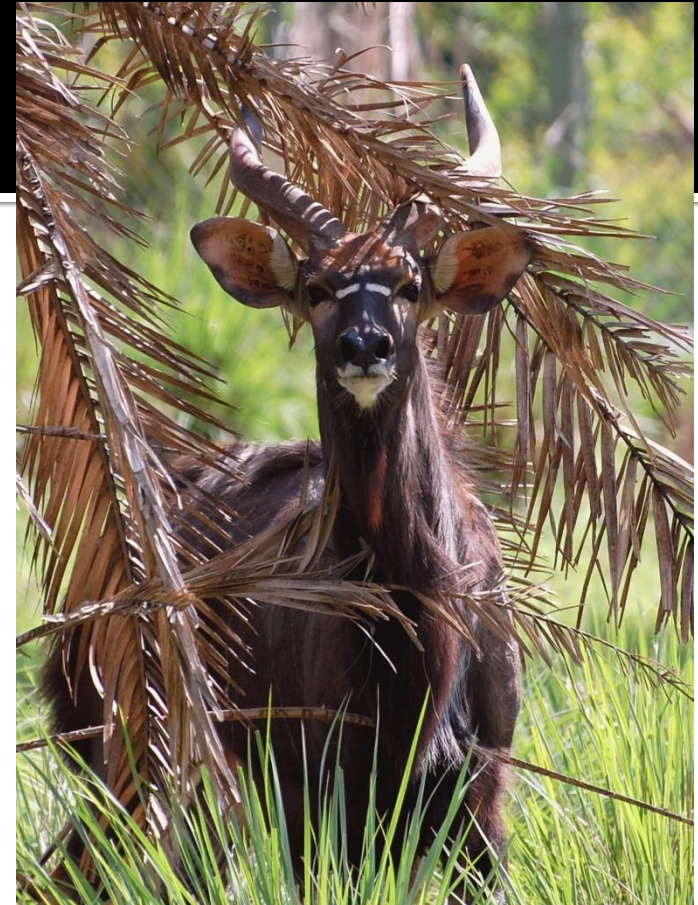


Program Liaison

- Martha Fischer
 - Saint Louis Zoo
 - fischer@stlzoo.org
 - 314-646-4610

Lowland Nyala 2017

- 62.128 (190) in 21 Institutions
- Yellow SSP - zoo population ↑
- IUCN Least Concern – wild population stable
- Challenges that adversely affect program:
 - New institutions needed for both bachelor and breeding groups
 - New genetics needed
- What TAG or Institutions can do to help program & improve sustainability?
 - Assist with removing barriers to importation of animals or semen for artificial insemination



Program Leader

- Steve Metzler
 - San Diego Zoo Safari Park
 - smetzler@sandiegozoo.org
 - 760-473-6993

Roan antelope 2017

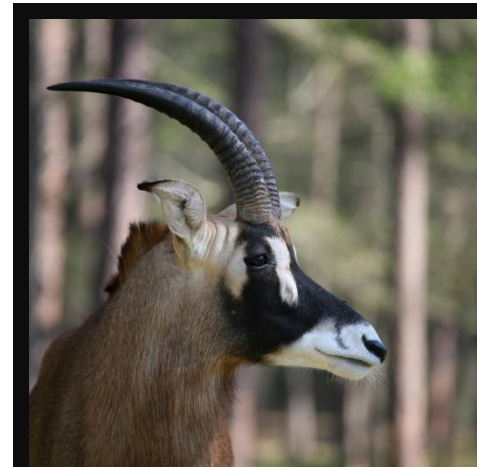
- 46.75.0 (121) in 10 institutions
- Yellow SSP - zoo population ↑
- Least Concern – wild population ↓
- Challenges that affect this program:
 - Loss of holding institutions
- What can TAG do to help program & improve sustainability?
 - Conduct a PVA
 - Continue to pursue new holding institutions

Program leader

- Andi Kornak
- Cleveland Metroparks Zoo
- amk@clevelandmetroparks.com
- 216.635.3373

Vice Chair

- Scotty Wade
- White Oak Conservation Center
- scottyw@wocenter.org
- 904-225-3357



Sable Antelope 2017

- 114 animals in 13 institutions
- Yellow SSP - zoo population ↓
- Low Risk-conservation dependent – wild population ↓
- Challenges that affect this program:
 - Lack of space/holders needed
 - New genetics required
 - Development of bachelor herds
- What can the TAG do to help improve the program & sustainability issues?
 - USDA import station to facilitate imports



- Jill Piltz, Studbook & SSP Coordinator
- Disney's Animal Kingdom
- Jill.M.Piltz@Disney.com
- 407-938-2850

Sitatunga 2017

- 27.44 (71) in 9 institutions
- Yellow Program - zoo population ↑
- Least Concern – wild population ↓
- Challenges that adversely affect program:
 - New institutions needed for bachelor or breeding groups
 - New genetics needed
- What TAG can do to help program & improve sustainability?
 - Work with US regulators allowing imports from international collections.



Program Leader

- Gil Myers
 - Smithsonian National Zoo
 - myersg@si.edu
 - 202-633-4189

Lesser Kudu-*Tragelaphus imberbis*

2017

- 53.63.0 (116) in 20 institutions
- Yellow SSP - zoo population : stable
- IUCN Near threatened – wild population ↓
- Challenges that adversely affect program:
 - Some aging bachelor herds are experiencing incompatibility. Finding placements for these individuals can be challenging.
 - New genetics needed.
- What the TAG can do to help program & improve sustainability?
 - Encourage holders to report births to the SSP coordinator and see if the animal is needed in the population before placement.
 - Import new founders from Europe.
 - Help coordinate an action plan for members of bachelor herds that need to be disbanded.



- Program Leader
- Lily Moore
- Saint Louis Zoo
- lmoores@stlzoo.org
- 314-646-4824

South African Springbok

- 31.31 (62) in 8 institutions
- Yellow SSP - zoo population ↑
- Least Concern – wild population ↑
- Challenges that affect program:
 - Most springbok in NA are of UNK and untraceable ancestry; SSP is phasing out UNK individuals in favor of subspecies *Antidorcas marsupialis marsupialis*
- What can TAG do to help program & improve sustainability?
 - Encourage institutions to follow SSP recs to stop reproducing UNK lineage springbok, and switch over to *A. m. marsupialis* subspecies



Program Leader

- Jessica Scallan
- Tulsa Zoo
- Jessica.scallan@sbcglobal.net
- 918.669.6201

Small Antelope Subgroup

Vice Chair, Steve Metzler,

smetzler@sandiegozoo.org



Black Duiker 2017

- 11.9 (20) in 6 institutions
- Red SSP–zoo population↓
- Least Concern –wild population ↓
- Challenges that affect program:
 - Lack of institutional holders
 - New genetics needed
 - Need to decrease trauma-related deaths
- Population has increased over the last two years



Program Leader

- Josh Sisk
 - Los Angeles Zoo
 - Josh.Sisk@lacity.org
 - 323-644-4220

Blue duiker 2017

- 30.23 (53) in 17 institutions
- **Red Program- zoo population ↓**
 - Least Concern – wild population stable
 - Challenges that affect program:
 - Need additional institutions
 - Importation needed. Institutions willing to put forth the effort/cost to import are needed.
 - Increase breeding population
 - What can TAG do to help program & improve sustainability?
 - Encourage AZA institutions to work with this program. Blue duikers are super adorable, cute, and would make a great addition to your collection plan. They can even be exhibited with other animals.



Program Leader

- Sarah Ksiazek
- **Dallas Zoo**
- alphadawg7@gmail.com
- 469.554.7235

Guenther's dik-dik 2017

- Institutions 2.0 at 2 institutions
- Red Program- zoo population ↓
- IUCN Least Concern – wild population stable
- Challenges that adversely affect program:
 - No females
 - No animals in private sector
 - Lack of institutional willingness to follow previous recommendations
- What TAG or Institutions can do to help program & improve sustainability?
 - Assist with the ability to import from Africa

Program Leader

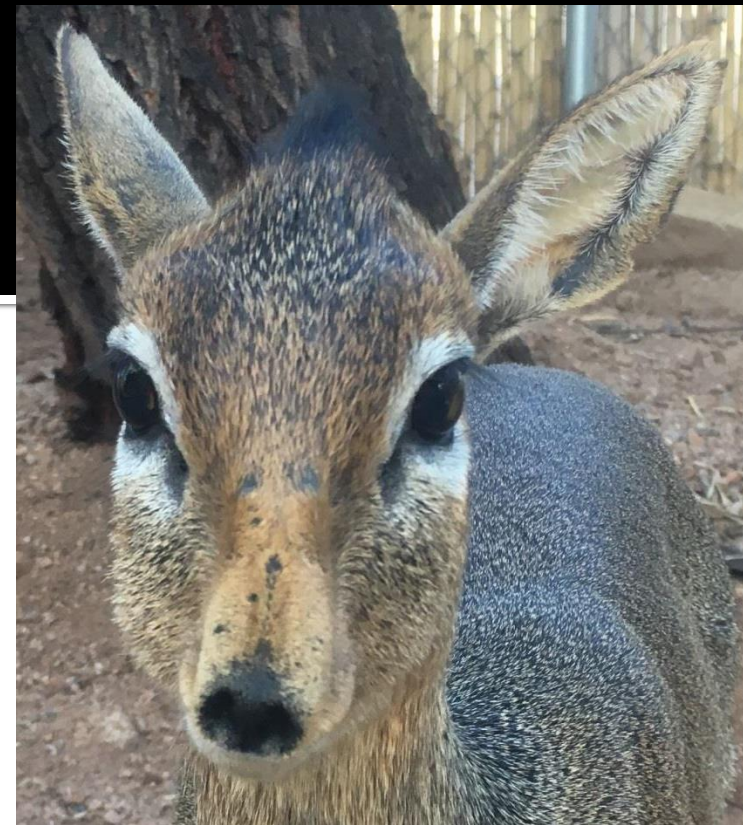
- Paige McNickle
 - Phoenix Zoo
 - pmcnickle@phoenixzoo.org
 - 602-451-8364

Vice Coordinator

- Lisa Fitzgerald
 - Dallas Zoo
 - Lisa.Fitzgerald@dallaszoo.com
 - 469-554-7217

Kirk's dik-dik 2017

- Institutions 16.19 at 18 institutions
- Red Program- zoo population ↓
- IUCN Least Concern – wild population stable
- Challenges that adversely affect program:
 - Small population size
 - Lack of new institutional interest
 - Poor genetics
 - Fractious nature of species.
Recommending institutions hand rear when possible
- What TAG or Institutions can do to help program & improve sustainability?
 - Assist with marketing of this species to increase zoo spaces to grow program
 - Assist with trying to import from Europe



- Program Leader - Paige McNickle
 - Phoenix Zoo
 - pmcnickle@phoenixzoo.org
 - 602-451-8364
- Vice Coordinator - Lisa Fitzgerald
 - Dallas Zoo
 - Lisa.Fitzgerald@dallaszoo.com
 - 469-554-7217

Klipspringer 2017

- 24.2 (48) in 18 institutions
- Red Program- Zoo Population ↑
- Least Concern-wild population stable
- Challenges that adversely affect program:
 - Small population size.
 - Lack of new institutional interest.
 - It is extremely important for this population, both genetically and demographically, that the population be grown to the target population size. All females capable of producing offspring be bred.
- What TAG can do to help program & improve sustainability?
 - Assist with marketing of this species to increase zoo spaces to grow program.



- Program Leaders
- Michael Lebanik-Studbook Keeper and Program Coordinator
 - Disney's Animal Kingdom
Michael.G.Lebanik@disney.com
(407) 721-9280

Red-flanked Duiker 2017

- 14.12 (26) in 12 institutions
- Red Program- zoo population ↓
- Least Concern – wild population ↓
- Challenges that adversely affect program:
 - Lack of new institutional holders
 - New genetics needed
- What TAG can do to help program & improve sustainability?
 - Possible importation in the near future
 - Assist with marketing of this species to increase zoo spaces to grow program



- Program Leader
- Nate Oliveira
 - Saint Louis Zoo
 - oliveira@stlzoo.org
 - 314-646-4546

Steenbok 2017

- 12.10 (22) in 5 Institutions
- Red Candidate Program- zoo population ↑
- IUCN Least Concern – wild population stable
- Challenges that adversely affect program:
 - Small population size
 - Lack of new institutional interest
 - Fractious nature of species.
Recommending institutions hand rear when possible
- What TAG or Institutions can do to help program & improve sustainability?
 - Assist with marketing of this species to increase zoo spaces to grow program

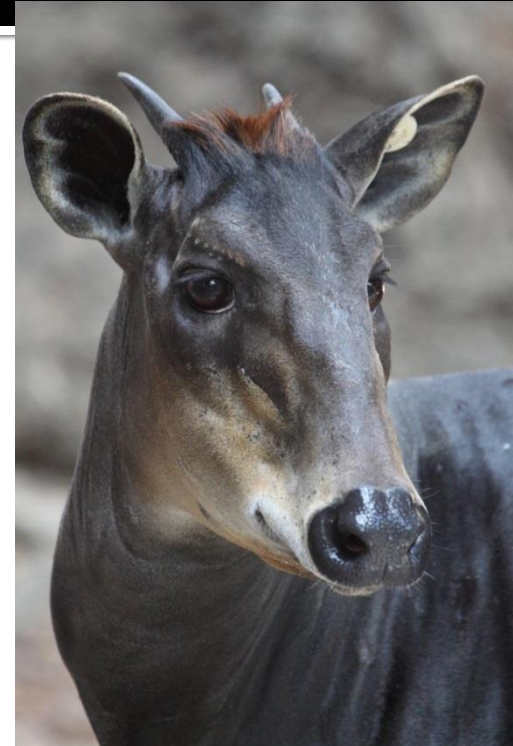


Program Leader

- Steve Metzler
 - San Diego Zoo Safari Park
 - smetzler@sandiegozoo.org
 - 760-473-6993

Yellow-backed duiker 2017

- 45.51.1 (97) in 36 Institutions
- Yellow SSP - zoo population ↑
- IUCN Near Threatened –wild population ↓
- Challenges that affect program:
 - New institutions needed to breed and hold non-breeding
 - New genetics needed
- What TAG or Institutions can do to help program & improve sustainability?
 - Encourage institutions to work with species, incl. in multi-species habitats
 - Facilitate exports



Program Leader
Linda Rohr Bachers
Milwaukee County Zoo
Linda.bachers@milwaukeecountywi.gov
(414) 256-5448

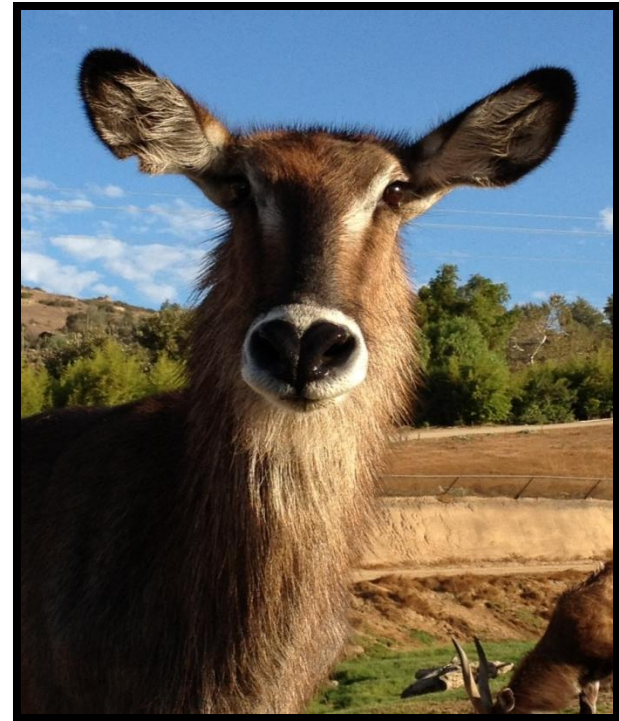
Waterbuck Subgroup

Vice Chair, Randy Rieches, rrieches@sandiegozoo.org



Common Waterbuck 2017

- 106.136.16 (258) in 16 institutions
- Yellow SSP - zoo population, stable
- Least Concern – wild population ↓
- Challenges that adversely affect program:
 - Lack of known pedigree for genetic management
 - Holding for surplus males
- What TAG can do to help program & improve sustainability?
 - Develop opportunities for multiple males to rotate within herds to enhance genetic diversity
 - Support an increase of known pedigree within current population by collecting and submitting ear notch and blood samples.



- Program Leader
- Jonnie Capiro-SSP & Studbook
 - San Diego Zoo Safari Park
jcapiro@sandiegozoo.org
(760) 738-5582

Nile Lechwe 2017

- 97.113.22 (232) in 10 Institutions
- Yellow SSP - zoo population ↑
- IUCN Endangered– wild population decreasing
- Current B&T plan out for review – comments due by April 7, 2017
- Challenges that adversely affect program:
 - New institutions needed for bachelor groups
 - New genetics needed
- What TAG or Institutions can do to help program & improve sustainability?
 - Explore potential importation/new genetics
 - Institutions should work with SSP to ensure breeding recommendations are carried out



Program Leader

- Mike Murray
 - Cleveland Metroparks Zoo
 - mjm@clevelandmetroparks.com
 - 216-635-3312

Red lechwe

- 35.58.3 (96) in 6 institutions
- Red Program (pending 1st studbook) - zoo population status UNK
- Least concern – wild population stable
- Challenges that affect program:
 - Need new holders to grow the population
- What can TAG do to help program & improve sustainability?
 - Recruit program leader
 - Need to identify new holders to take animals in from private breeders



Program leader:

- *Vacant – program leader needed!*

Uganda kob

- 25.21.3 (49) in 5 institutions
- 3.9 (12) in 1 private institution
- Red Program (pending 1st studbook)
 - zoo population status UNK
- Least concern – wild population stable
- Challenges that affect program:
 - Small zoo population is not sustainable
 - Lack of institutional interest
- What can TAG do to help program & improve sustainability?
 - Recruit program leader
 - Need new zoo holders to bring in animals from private breeders to build a sustainable population



Program leader:

- ***Vacant – program leader needed!***

Mountain reedbuck

- Not managed in zoos
- ISF – *in situ* Focus program
- Least Concern – wild population stable (pop. 36,000)
- Challenges that affect wild population:
 - Over hunting
 - Habitat destruction/over-grazing
 - Competition with livestock & humans
- What can TAG do to help program & improve sustainability?
 - Encourage better species monitoring in home ranges



Program Liaison

- Randy G. Rieches
- San Diego Zoo Safari Park
- rrieches@sandiegozoo.org
- 760-738-5015

Hartebeest Subgroup

Vice Chair, Dan Beetem, dbeetem@thewilds.org



Bontebok 2017

- 25.34.8 (67) in 17 institutions
- Yellow SSP - zoo population ↓
- Near threatened-wild population stable
- Challenges that adversely affect program:
 - Large number of animals on a private ranch excluded due to unknown genetics
 - New genetics needed
 - Not all of the females in the population are in a breeding situation
- What TAG can do to help program & improve sustainability?
 - USDA import station to facilitate imports
 - Encourage all facilities holding females to breed



Program Leader

- Lissa McCaffree
- San Diego Zoo Safari Park
- lmccaffree@sandiegozoo.org
- 760-492-4486

Jackson's hartebeest 2017

- 2.3.0 (5) in 3 institutions
- Red Program - zoo population is declining fast
- Least Concern – wild population ↓
- Challenges that affect program:
 - We may not have any more breeding females in the population
 - New genetics needed
 - Carrier of MCF virus
- What can TAG do to help program & improve sustainability?
 - We need breeding females



Program Leader

- Mollye Nardi
- Great Plains Zoo
- mnardi@gpzoo.org
- 605.367.8313

Wildebeest 2017

- 78.124.49 in 23 institutions
- Yellow SSP - zoo population stable
- Least Concern
 - Some isolated populations are declining
- Challenges that adversely affect program:
 - Older females - not breeding or their calf mortality is increasing
 - New genetic diversity will be needed in the future
- What TAG can do to help program & improve sustainability?
 - Continue to support genetic testing



Program Leader

- Kristen Wolfe
- Disney's Animal Kingdom
- Kristen.Wolfe@disney.com
- 407.938.2377

Hirola 2017

- Not managed in zoos
- ISF – *in situ* Focus program
- Critically endangered – wild population ↓
(fewer than 500 animals in the wild)
- Challenges that affect wild population:
 - Predation
 - Habitat destruction/over-grazing
 - Competition with livestock & humans
- What can TAG do to help program & improve sustainability?
 - Encourage AZA institutions to support *in situ* conservation through:
 - NRT Hirola Recovery Project - population in the predator-proof sanctuary has grown from 48 to 129 animals (<http://www.nrt-kenya.org/news-list/6/20/2016-hirola-update>)
 - Hirola Conservation Programme (www.hirolaconservation.org)



Program Liaison

- Martha Fischer
- Saint Louis Zoo
- fischer@stlzoo.org
- 314.646.4610

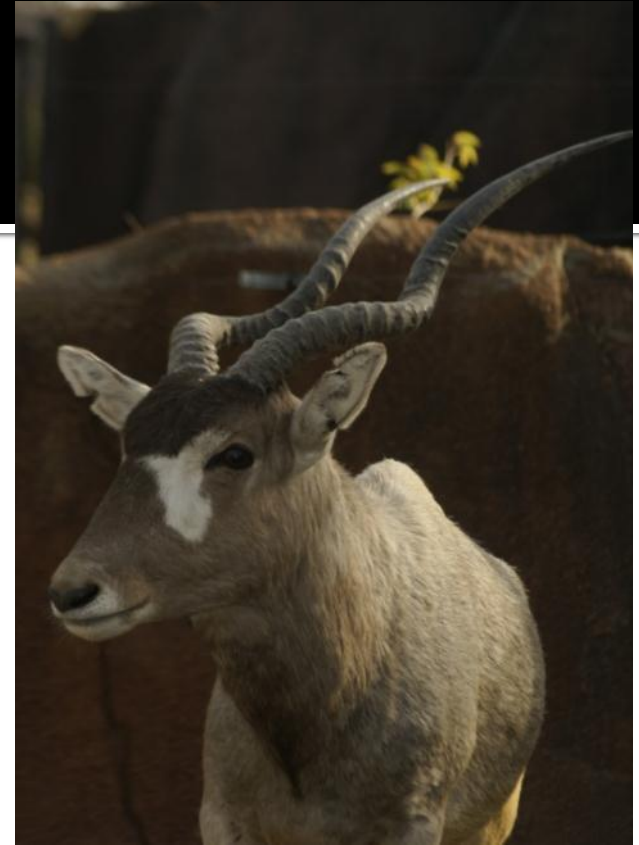
Aridland Antelope, Gazelle & Pronghorn Subgroup

Vice Chair, Adam Eyres, adame@fossilrim.org



Addax 2017

- 78.153 (231) in 23 institutions
- Yellow SSP
- Critically Endangered
- Challenges that adversely affect program:
 - Lack of space - more holders needed
- What TAG can do to help program & improve sustainability?
 - Encourage holding institutions to work with bachelor herds



- Program Leader
- Bill Houston
 - Saint Louis Zoo
 - Houston@stlzoo.org
 - 314.646.4826

Addra Gazelle 2017

- 80.103 (183) in 24 institutions
- Yellow SSP – stable
- Critically Endangered
- Challenges that adversely affect program:
 - Lack of space – especially for males
 - Unrelated animals need to be identified
- What TAG can do to help program & improve sustainability?
 - Encourage institutions to work with this high priority species



- Program Leader
- Tim Thier
 - Saint Louis Zoo
 - tthier@stlzoo.org
 - 314.646.4647

Arabian Oryx 2017

- 35.82 (117) in 6 AZA & 2 non-AZA institutions
- Yellow SSP - zoo population growing
- Vulnerable – wild population
- Challenges that affect this program:
 - Lack of space/holders limits population to ~110 animals
 - Surplus males (do not house well in bachelor groups)
 - Losing extra male holding space soon!
- What can the TAG do to help improve the program & sustain ability issues?
 - Population management of surplus males- thanks to zoos that help do this now!
- 2017 B&T Plan being published soon!

- Program leader
 - Michelle Hatwood
 - Audubon Species Survival Center
 - mhatwood@auduboninstitute.org
 - 504.398.3153



Cuvier's gazelle

- 27.54 (81) in 6 institutions
- Yellow SSP - zoo population ↓ to somewhat stable
- Endangered – wild population unknown
- Challenges that affect program:
 - Lack of space – more holders needed.
 - ♀/♀ aggression has been noted in some collections.
- What can TAG do to help program & improve sustainability?
 - Generate an Antelope mixed species survey/database that can be updated on a regular basis.

Program Leader

- Wendy Enright
- The Living Desert
- Wenright@Livingdesert.org
- 760.346.5694 Ext. 2211



Fringe-eared oryx 2017

- 7.31 (38) animals in 4 institutions
- Red SSP - zoo population ↓
- Near Threatened – wild population ↓
- Challenges that affect this program:
 - Lack of space – more holders needed
 - New genetics required
 - Need to increase the population size
- What can the TAG do to help the program and improve sustainability?
 - Facilitate import for increased genetic diversity
- Program leader
- Lissa McCaffree
- San Diego Zoo Safari Park
- lmccaffree@sandiegozoo.org
- (760) 492-4486



Gemsbok 2017

- 29.62.2 (93) in 11 institutions
- Yellow SSP - zoo population ↑
- Least Concern – wild population ↑
- Challenges that affect this program:
 - Lack of space - more holders needed
 - Lack of known pedigree and individual ID's
 - Need for rotating breeding males at each institution
- What can the TAG do to help the program and improve sustainability?
 - Facilitate import (poss. White Sands) to increase genetic diversity



- Program Leader
- Lissa McCaffree
- San Diego Zoo Safari Park
- lmccaffree@sandiegozoo.org
- (760) 492-4486

Grant's Gazelle 2017

- 13.33 (46) in 7 institutions
 - Red SSP - zoo population ↓
- Least Concern – wild population ↓
- Challenges that affect program:
 - Lack of available animals, high infant mortality
 - Unknown pedigrees
- What can TAG do to help program & improve sustainability?
 - Help develop a plan to deal with the large amount of UNK data in this population
 - Help program meet zoos' demands for animals 2017



Program Leader:

Allison Suda

- Roosevelt Park Zoo
- asudarpz@gmail.com
- (701)857-4166

Peninsular Pronghorn 2017

- 17.14 (31) in 7 institutions
- Red SSP
- Endangered – wild population ↑
- Challenges that adversely affect program:
 - Small captive population in need of imports
 - Loss of animals to Epizootic Haemorrhagic Disease and Blue Tongue
- What TAG can do to help program & improve sustainability?
 - Support for EHD and BT vaccine
 - Support for Peninsular Pronghorn Recovery Project in Baja Ca Sur



- Program Leader
Melodi Tayles-SSP / Studbook

San Diego Zoo Safari Park
mtayles@sandiegozoo.org
(760) 855-1911

Pronghorn

- *A. a. americana* x.x (x) in x institutions
A. a. peninsularis – 12.10 (22) in 5 institutions
- Both - Red Program (pending 1st studbook) - zoo population status UNK
- *A. a. americana* – least concern – wild population stable
A. a. peninsularis - vulnerable – wild population ↓ (below 50 animals)
- Challenges that affect program:
 - Currently – no studbook (new program, studbook in progress)
 - Need to decrease/stabilize *americana* and increase *peninsularis*
 - Can be susceptible to Epizootic Hemorrhagic Disease (EHD)
- What can TAG do to help program & improve sustainability?
 - Promote species to find new holders
 - Encourage participation in Peninsular Pronghorn Recovery Program

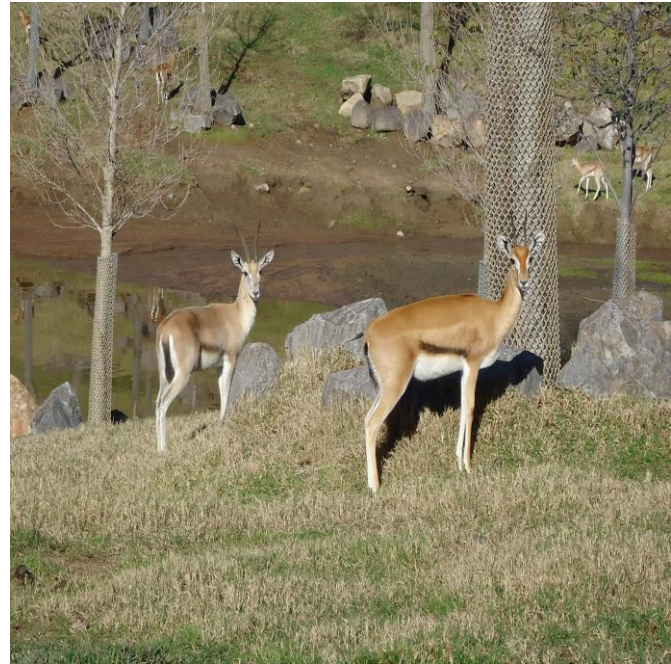


Program Leader

- Melodi Tayles
- San Diego Zoo Safari Park
- mtayles@sandiegozoo.org
- 760.738.5026

Red-fronted gazelle 2017

- 14.19 (33) in 1 AZA institutions
- Candidate Program
- **Vulnerable – wild population ↓**
- Challenges that affect program:
 - ✦ Need more holders
 - ✦ Extremely small genetic foundation
- What can TAG do to help program & improve sustainability?
 - ✦ Encourage holders to designate space for this program



- ✦ Program Leader
- ✦ Charlie Hyde
- ✦ San Diego Zoo Safari Park
- ✦ chyde@sandiegozoo.org
- ✦ 619-212-9173

Scimitar-horned Oryx 2017

- Globally
 - 603.862.56 (1521) animals in 151 of institutions
 - 236 births
 - 164 deaths
 - 105 transfers
 - SSP
 - 80.147.0 (227) animals in 19 institutions
 - EEP
 - 255.387.6 (651) animals in 60 institutions
 - 321 in Middle East outside of effective management
 - 109.217.1 (327) in managed EEP population
- Yellow SSP - zoo population ↑
 - 212 animals in 17 institutions increased to 227 in 19 institutions
- IUCN: Extinct in the wild
 - However, if Chad re-introduction is successful & oryx are re-established, reproduce and survive, status could be downgraded to Critically Endangered in the future
- Challenges that adversely affect program:
 - Maturing males are difficult to manage in a group
 - Valuable males being castrated or moved out of SSP/EEP managed programs
- What TAG or Institutions can do to help program & improve sustainability?
 - Help with solution for extra males
 - Need holders willing to hold bachelor groups or single males



Program Leaders

- RoxAnna Breitigan- SSP
 - The Living Desert
 - rbreitigan@livingdesert.org
 - 760-346-4898
- Tania Gilbert- Studbook
 - Marwell Wildlife
 - taniag@marwell.org.uk
 - +44 (0) 1962 777934

Soemmering's Gazelle 2017

- 18.31(49) in 5 AZA institutions & 2 non-AZA
- Red SSP - zoo population ↑
- Vulnerable – wild population ↓
- Challenges that affect program:
 - Lack of space - more holders needed
 - Genetics/high infant mortality
- What can TAG do to help program & improve sustainability?
 - Support genetic studies to improve breeding success
 - Need to import new founders/or founder genetic material



- Program Leader
- Nicole Becker
- Saint Louis Zoo
- becker@stlzoo.org
- 937-307-4759

Speke's gazelle 2017

- 19.40 (59) in 11 institutions
- Yellow SSP - zoo population ↑
- Endangered – wild population ↓
- Challenges that affect program:
 - Lack of space - more holders needed
 - New genetics needed
- What can TAG do to help program & improve sustainability?
 - Develop import station so Speke's gazelles could be imported from Al Ain Zoo in UAE 2017



Program Leader

- Christy Poelker
- Saint Louis Zoo
- poelker@stlzoo.org
- 314.646.4651

Slender-horned gazelle 2017

- 41.46 (87) in 8 AZA institutions & 2 non-AZA
- Yellow SSP - zoo population ↑
- Endangered – wild population ↓
- Challenges that affect program:
 - Lack of space - more holders needed
 - Extremely small genetic foundation – import needed
- What can TAG do to help program & improve sustainability?
 - Develop import station so Slender-horned gazelles could potentially be imported from Tunisia in 2018
 - Encourage support of field conservation of this species through Sahara Conservation Fund



- Program Leader
- Brigid Randle
- The Living Desert
- brandle@livingdesert.org
- 760-346-5694 Ext.

Saiga

- Not managed in zoos
- ISF – *in situ* Focus program
- Critically Endangered – wild population ↓
- Challenges that affect wild population:
 - Poaching for horns and meat
 - Competition with livestock & humans
 - Habitat destruction/over-grazing
- What can TAG do to help program & improve sustainability?
 - Encourage AZA institutions to support saiga conservation projects in Russia and Central Asia



Program Liaison

- Dan Beetem
- The Wilds
- dbeetem@thewilds.org
- 740.638.5030 ext 2110

Thomson's gazelle 2017

- 61.115 (176) in 18 institutions
- Yellow SSP - population stable
- Near threatened – wild population↓
- Challenges that adversely affect program:
 - Highly unknown population
 - Placement of bachelors
- What TAG can do to help program & improve sustainability?
 - Encourage institutional cooperation



- Program Leader
- Matt Gelvin
 - San Diego Zoo Safari Park
mgelvin@sandiegozoo.org
760-622-5026

Giraffe/Okapi Subgroup



Masai giraffe 2017

- 58.63 (121) in 32 institutions
- Yellow SSP - zoo population slightly ↑
- Vulnerable— wild population ↓
- Challenges that affect this program:
 - Rising levels of inbreeding
 - New genetics needed, but none available
 - Remain low on available females
- What can TAG do to help program & improve sustainability?
 - Continue to encourage holders to switch from generic to Masai



Program Leader

- Sheri Horiszny
- Oregon Zoo
- Sheri.horiszny@oregonzoo.org
- 503 220 2444

Retic/Roth giraffe 2017

- 191.253.1 (445) in 84 institutions
- Green SSP - zoo population stable-to-slightly ↑
- Vulnerable – wild population ↓
- Challenges that affect this program:
 - Population is still growing despite it being well over target.
 - Some unknown pedigree issues
- What can TAG do to help program & improve sustainability?
 - Encourage zoos to focus on other Masai - the giraffe population is twice the size necessary for genetic or demographic sustainability and growing steadily. Devote some of these resources to other programs.



Program Leader

- Sheri Horiszny
- Oregon Zoo
- Sheri.horiszny@oregonzoo.org
- 503 220-2444

Okapi 2017

- 51.51 (102) in 27 institutions (incl. Japan and Al Bustan)
- Yellow SSP - zoo population stable
- Endangered - wild population ↓ in unprotected areas
- Challenges that affect program:
 - Always looking for more holders!
 - Genetic exchanges needed
- What can TAG do to help program & improve sustainability?
 - Improve ability to import



Program Leader

- Steve Shurter
- sshurter@white-oak.org

2017 Midyear Meeting Program Updates

AZA Buffalo, Bison and Cattle TAG

Chair, Lisa Smith, lsmith@gpzoo.org

**ASSOCIATION
OF ZOOS
AQUARIUMS &**

African Savannah Buffalo 2017

- 27.43.2 (72) in 5 institutions
- Yellow SSP - zoo population ↑
- Least Concern – wild population ↓
- Challenges that adversely affect program:
 - Loss of holding institutions
 - Need to improve genetic diversity
- What TAG or Institutions can do to help program & improve sustainability?
 - New holding institutions
 - Include this weather hearty species in collection planning



Photo: Jenna Schmidt, Tulsa Zoo

- Program Leader
 - Jordan Schimming
 - Denver Zoo
 - jschimming@denverzoo.org
 - (720) 337-1614

Anoa 2017

- 10 in 7 AZA institutions
- 153 in 3 private institutions
- Yellow SSP - zoo population ↓
(overall, pop in NA ↑)
- Endangered – wild population ↓
- Challenges that affect program:
 - Lack of space - more holders needed
 - Population in AZA decreasing due to species management challenges
- What can TAG do to help program & improve sustainability?
 - Encourage AZA institutions to step up and commit to conserving anoa and other wild cattle



Program Leader

- Tena Welsh
- Tena.Welsh@pdza.org

2017 Midyear Meeting Program Updates

AZA Caprinae TAG

Chair, David Powell, dpowell@stlzoo.org

**ASSOCIATION
OF ZOOS
AQUARIUMS &**

Chinese Goral 2017

- 12.13 (25) in 10 institutions
- Red SSP - zoo population ↓
- Vulnerable – wild population ↓
- Challenges that adversely affect program:
 - Decline in breeding results
 - Aging population
 - Demographics
 - New genetics needed
- What TAG can do to help program & improve sustainability?
 - Work with US regulators allowing imports from European collections or the wild.



- Program Leader
- Gil Myers
 - Smithsonian National Zoo
 - myersg@si.edu
 - 202-633-4189

Desert Bighorn Sheep 2017

- 30.42 (72) in 7 institutions
- Yellow SSP
- Wild population stable
- Challenges that adversely affect program:
 - Lack of space
 - New genetics needed
- What TAG can do to help program & improve sustainability?
 - More holders needed
 - Consider replacing *Ovis canadensis canadensis* with *O.c.nelsoni*



- Program Leader
- Maureen McCarty
 - The Living Desert
 - mmccarty@livingdesert.org
 - 760-346-5694 ext. 2620

Kordofan Aoudad 2017

- 54 aoudad in 5 institutions
- Yellow SSP
- IUCN-Vulnerable
- Challenges that adversely affect program:
 - Lack of space (Need Holders)
 - Need facilities with nominate form to switch to the genetically pure Kordofan aoudad



- Program Leader
- Molly Shea
 - Fossil Rim
 - mollys@fossilrim.org
 - 254-898-4209

Nubian ibex

- 22.40 (62) in 9 institutions
- Red Program - New Studbook ↓
- Vulnerable – wild population ↓
- Challenges that adversely affect program:
 - Lack of space - more holders needed
 - New genetics needed
- What can TAG do to help program & improve sustainability?
 - Work with European Population Manager to import new genetics
 - Institutional support needed for Dr. Omar Attum's research: Establishing a population monitoring program in Egypt (contact Dr. Attum at oattum@ius.edu)



Program Leader

- Alison Mott
- Sacramento Zoo
- amott@saczoo.org
- 916.808.8559

Sichuan Takin 2017

- 69.61.2 (132) in 26 institutions
- Yellow SSP - zoo population ↑
- Vulnerable – wild population ↓
- Challenges that adversely affect program:
 - Lack of space - more holders needed, promote bachelor groups
 - New genetics needed
- What TAG can do to help program & improve sustainability?
 - Assist with importations/exportations from Europe and Asia.
 - Help recruit new institutions
 - Promote bachelor groups



- Program Leader
- Dave Bernier
- Lincoln Park Zoo
- dbernier@lpzoo.org
- 312-742-0539

Transcaspiian Urial 2017

- 21.44 (65) in 5 Institutions
- Yellow Candidate Program
- Zoo Population Stable.
- IUCN Vulnerable– wild population decreasing
- Challenges that adversely affect program:
 - Lack of space – more holders needed
 - Genetics – improve genetic health
- What TAG or Institutions can do to help program & improve sustainability?
 - Promote species to increase zoo spaces to grow program



Program Leader

- Jon Rolfs
 - San Diego Zoo Safari Park
 - jrolfs@sandiegozoo.org
 - 760-473-5582

Turkmenian Markhor 2017

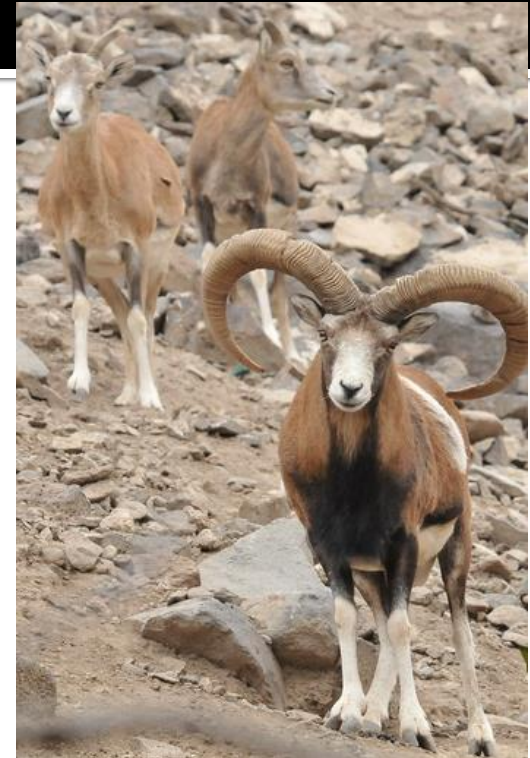
- 41.65.2 (108) in 11 institutions
- Yellow SSP - zoo population, stable
- Near threatened – wild population, stable
- Challenges that adversely affect program:
 - Lack of space
 - Compliance with SSP recommendations
- What TAG can do to help program & improve sustainability?
 - Encourage institutional cooperation
 - Support for conservation projects in home range countries



- Program Leaders
- Thomas LaBarge -SSP
 - Rosamond Gifford Zoo
 - labarge504@verizon.net
 - 315-382-9015
- Seth Groesbeck – Studbook
 - Rosamond Gifford Zoo
 - sagroes@yahoo.com
 - 315-435-8511

Armenian Mouflon 2017

- 4.12.1 (17) in 2 institutions
- RED SSP - zoo population↓
- Vulnerable – wild population ↓
- Challenges that adversely affect program:
 - New genetics needed
 - Non-cooperation from facilities
- What TAG can do to help program & improve sustainability?
 - Encourage institutional cooperation
 - New source of animals



- Program Leaders
- Seth Groesbeck – Studbook
 - Rosamond Gifford Zoo
 - sagroes@yahoo.com
 - 315-435-8511

2017 Midyear Meeting Program Updates

AZA Cervid TAG

Chair, Michelle Hatwood,
mhatwood@auduboninstitute.org

**ASSOCIATION
OF ZOOS
AQUARIUMS &**

Bactrian wapiti 2017

- 10.27.19 (56) in 2 institutions
- Red candidate program
- Least concern – wild population ↑
 - IUCN Classified with all Red deer
- Challenges that adversely affect program:
 - Not a charismatic species
 - Hard species to manage in smaller exhibits
- What TAG can do to help program & improve sustainability?
 - Encourage institutional cooperation
 - Encourage import of future genetic diversity



Program Leader

Curt Coleman – Studbook, PM

- the Wilds
- ccoleman@thewilds.org
- 740-638-5030

Barasingha 2017

- 21.32 (54) in 4 institutions
- Yellow SSP - zoo pop. declining
- Vulnerable – wild population ↑
- Challenges that adversely affect program:
 - Lack of space
 - Lack of holders of bachelors
 - CWD monitoring varies by state
- What TAG can do to help program & improve sustainability?
 - Encourage institutional interest



- Program Leader
- Matt Gelvin
 - San Diego Zoo Safari Park
mgelvin@sandiegozoo.org
760-622-5026

Barbary stag

- 3.43 (46) in 1 institution
- Red Program - zoo population ↓
- Least Concern
 - *Barbarus* ssp. declining in Africa
- Challenges that affect this program:
 - Lack of space / holders needed
- What can TAG do to help program & improve sustainability?
 - More institutions needed to sustain this species
 - Imports not possible from other captive programs -ZIMS

Program leader

- Michael Langridge
- San Diego Zoo
- SDwildlife1976@yahoo.com
- 619.231.1515



Calamian deer

- 7.9 (16) in 3 institutions
- Red Program – zoo population stable
- Endangered – wild population ↓
- Challenges that affect this program:
 - Low reproductive success
 - Captive population declining fast
 - New genetics required
- What can TAG do to help program & improve sustainability?
 - USDA import station to facilitate imports

Program leader

- Robin Noll
- Los Angeles Zoo
- Robin.noll@lacity.org
- 323.644.4125



Chilean Pudu 2017

- 18.24 (42) in 13 institutions
 - 6 births in 2016
- Red SSP -zoo population↓
- CITES I, IUCN Vulnerable –wild population ↓
- Challenges that adversely affect program:
 - Infant mortality has increased
 - New male founders needed
 - Revisit European imports
- What TAG can do to help program & improve sustainability?
 - Develop collaborative in country pudu rehabilitation program with Chile or EAZA

- Program Leader
 - Craig Gibbs
 - Queens Zoo
 - cgibbs@wcs.org
 - 718-271-3042



Eld's Deer 2017

- 25.43 (68) in 5 institutions
- Yellow SSP - zoo population ↓
- Endangered – wild population ↓
- Challenges that adversely affect program:
 - Lack of space/holders needed
 - CWD concerns restricting movement of deer between facilities
 - New genetics needed
- What TAG can do to help program & improve sustainability?
 - More holders or space is needed to breed and maintain GD



Program Leader

- Dolores Reed-SSP and Studbook keeper
 - Smithsonian Conservation Biology Institute
 - redm@si.edu
 - 540-635-6524

Malayan Chevrotain 2017

- 13.17 (30) at 7 institutions
- Red SSP -zoo population ↓
- Least Concern –wild population ↓
- Challenges that affect this program:
 - New genetics required
- What can the TAG do to help improve the program & sustainability issues?
 - USDA import station to facilitate imports

- Program leader
 - Hulya Khambatta
 - Bronx Zoo
 - hkhambatta@wcs.org
 - 718-220-1752



MOOSE 2017

- 14.33 (47) at 12 institutions
- Red SSP -zoo population ↑
- Stable wild population but falling in Minnesota
- Challenges that adversely affect program:
 - CWD prohibits many zoos from accepting wild orphans
 - Husbandry has improved but more work is needed
- What TAG can do to help program & improve sustainability?
 - Coordinate captive breeding efforts to meet CWD restrictions in all states
 - Provide advice on husbandry challenges

- Program Leader
 - Tony Fisher
 - Minnesota Zoo
 - Tony.fisher@state.mn.us
 - 952-431-9275
 - 2017 Studbook update in progress



Pere David's deer 2017

- 52.66.2 (120) in 12 institutions
- Yellow SSP - zoo population, stable
- Classified (EW) extinct in the wild, but small free ranging populations have become established.
- Challenges that adversely affect program:
 - Need more breeding groups in current holding facilities.
- What TAG can do to help program & improve sustainability?
 - Encourage more institutions to house/breed this species.



- Program Leaders
 - Beth Schille – Studbook/SSP**
 - Disney's Animal Kingdom
 - beth.schille@disney.com
 - 407-938-3201

Red Brocket Deer 2017

- 8.5 (13) in 3 AZA & 1 non-AZA
- Red SSP -zoo population ↓
- Wild population decreasing ↓
- Challenges that affect this program:
 - Recent loss of valuable animals
 - Vacant program leader
- What can the TAG do to help improve the program & sustainability issues?
 - Need a Zoo to champion this species by importing animals from Mexico
 - There is interest in this species, but no available animals
 - Encourage staff to become a P.L.

- Program leader
 - Vacant "*your name here!*"



Reeves' muntjac 2017

- 77.77.7 (161) in 51 institutions (as of 2014)
- **Candidate Program -zoo population stable**
- **Least Concern- population stable**
- Challenges that adversely affect program:
 - No population management
 - First studbook still being created
- What TAG can do to help program & improve sustainability?
 - Encourage institutional cooperation while first studbook is being created.
 - Support *in situ* conservation effort of species' habitat that will directly affect endangered species as well.



Program Leader

Jen Webb – Studbook

- Zoo Atlanta
- jwebb@zooatlanta.org
- 404.754.8943

Siberian Musk Deer 2017

- 10.7 (17) in 5 institutions
- Candidate Program – zoo population stable
- Vulnerable (endangered?) – wild population declining
- Challenges that adversely affect program:
 - Small population size
 - Few holding institutions
 - Temperature constraints – limited to northern latitude zoos
- What TAG can do to help program & improve sustainability?
 - Encourage more holders
 - Continue USDA regulation mitigation for population flow to and from Canada
 - Imports from Europe for GD

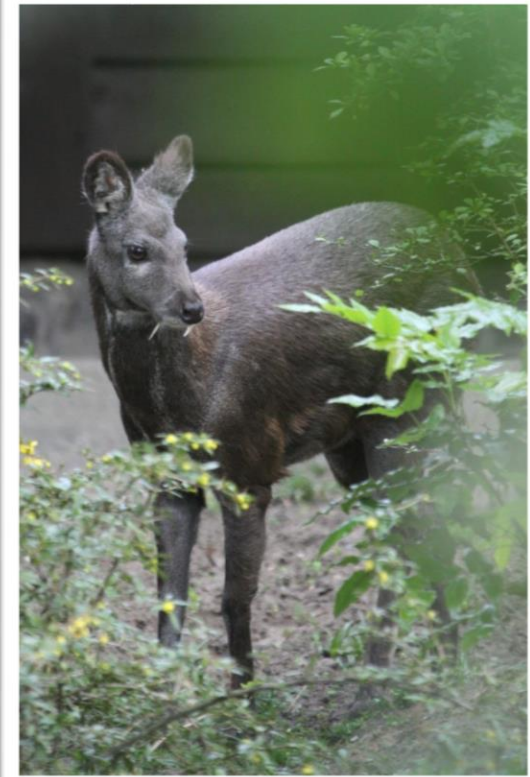
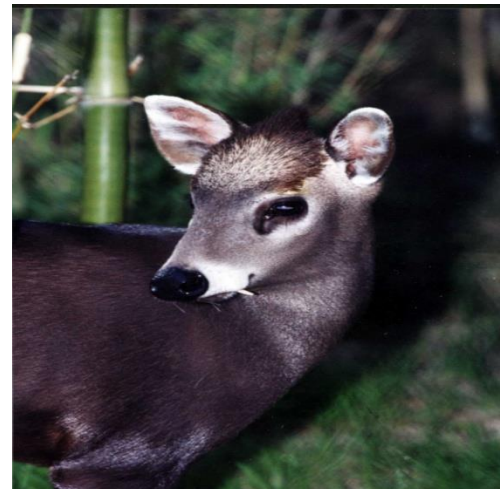


Photo Credit: Brent Huffman

- Program Leader
 - Matthew Ardaiole – SSP/Studbook
 - Denver Zoo
 - mardaiolo@denverzoo.org
 - 720-337-1669

Tufted Deer 2017

- 36.25 (61) in 19 institutions
- Yellow SSP - zoo population ↓
- Near Threatened – wild population ↓
- Challenges that affect this program:
 - Extra males
 - New genetics may be needed in the future
- What can the TAG do to help improve the program & sustainability issues?
 - USDA import station to facilitate imports
- Program leader
- Steve Castillo
- Disney Animal Kingdom
- Steve.castillo@disney.com
- 407-938-2335



White-lipped Deer 2017

- 10.15 (25) animals in 2 institutions
- Red SSP- zoo population ↓
- Vulnerable – wild population ?
 - May be increasing?
- Challenges that affect this program:
 - Development of bachelor herds
 - CWD issues impacting movement of larger cervids more than smaller species
- What can the TAG do to help improve the program & sustainability issues?
 - Increase interest and space
 - Coordinate captive breeding efforts to meet CWD restrictions in all states

- Program leader
- Steve Castillo
- Disney Animal Kingdom
- Steve.castillo@disney.com
- 407-938-2335



2017 Midyear Meeting Program Updates

AZA Equid TAG

Chair, Tim Thier, tthier@stlzoo.org

**ASSOCIATION
OF ZOOS
AQUARIUMS &**

Asian Wild Horse 2017

- 61.72.1 (134) in 22 institutions
- Yellow SSP - zoo population, stable
- Endangered – wild population ↑
- Challenges that adversely affect program:
 - Compliance with SSP recommendations
 - Zoos reluctant to hold bachelor groups
- What TAG can do to help program & improve sustainability?
 - Encourage institutional cooperation with SSP plans
 - Support conservation efforts in Mongolia
<http://support.mnzoo.org/truewildhorse/>



- Program Leaders
- Tony Fisher-SSP
 - Minnesota Zoo
 - tony.fisher@state.mn.us
 - 952-431-9275
- Roby Elsner – Studbook
 - Bronx Zoo
 - relsner@wcs.org
 - 305-773-3734

Grevy's Zebra 2017

- 62.111.1 (174) at 38 institutions
- Green Program - zoo population ↑
- Endangered– wild population stable
- Challenges that adversely affect program:
 - Due to space constraints it is important to identify additional holding institutions.
 - Male holding space is an SSP priority. Zoos with breeding herds need to be able to house male offspring for 2-4 years. Facilities for separating stallions should include outdoor access.
- What TAG can do to help program & improve sustainability?
 - **TAG Recommendation:** Zoos with common (plains) zebras in single-species exhibits are urged to replace them with Grevy's zebras.



- Program Leader
- Martha Fischer
 - Saint Louis Zoo
 - fischer@stlzoo.org
 - 314.646.4610

Hartmann's Mountain Zebra 2017

- 18.45 (63) in 16 institutions
- Yellow SSP – zoo population ↑
- Vulnerable – wild population ↓
- Challenges that adversely affect program:
 - Currently not enough surplus animals to meet increased demand
 - Population is becoming increasingly related
- What TAG can do to help program & improve sustainability?
 - Continue to influence institutions to utilize facilities to house Mt. Zebra over more common Plains zebra



- Program Leader
- Tommy Jordan
 - Disney's Animal Kingdom
 - Thomas.t.jordan@disney.com
 - 407.427.6058

Persian Onager 2017

- 9.25 (34) in 3 institutions
- Red SSP – zoo population stable
- Endangered – wild population stable
- Challenges that adversely affect program:
 - Lack of space - more holders needed
 - Genetics- new genetics needed; semen being imported from EAZA
- What TAG can do to help program & improve sustainability?
 - Consider managing onagers and kulan as a single population instead of separate sub-species to allow “hybrids” and animals of lesser known pedigrees into the program



- Program Leader
- Kate Volz
 - Smithsonian National Zoo
 - volzk@si.edu
 - 202.633.3675

Plains Zebra 2017

- 4.196 (270) in 64 institutions
- Yellow SSP - zoo population stable
- Least Concern – wild population stable
- Challenges that affect program:
 - Small number of viable males
- What can TAG do to help program & improve sustainability?
 - Keep viable males intact for breeding recommendations
 - Possible bachelor herd facilities



Program Leader

- John Register
- Houston Zoo
- jregisert@houstonzoo.org
- 713.533.6682

Somali Wild Ass 2017

- 21.35 (56) in 10 institutions
- Yellow SSP - zoo population ↑
- Critically Endangered – wild population ↓
- Challenges that affect program:
 - Lack of space - more holders needed
 - Institutions need to be prepared to hold offspring in reserve for this program for at least 2 years (and sometimes longer)
- What can TAG do to help program & improve sustainability?
 - Encourage holding institutions to hold bachelor males



Program Leader

- Tim Thier
- Saint Louis Zoo
- tthier@stlzoo.org
- 314.646.4647

2017 Midyear Meeting Program Updates

AZA Wild Pig, Peccary and Hippo TAG

Chair, Martin Ramirez, martin.ramirez@zoo.org

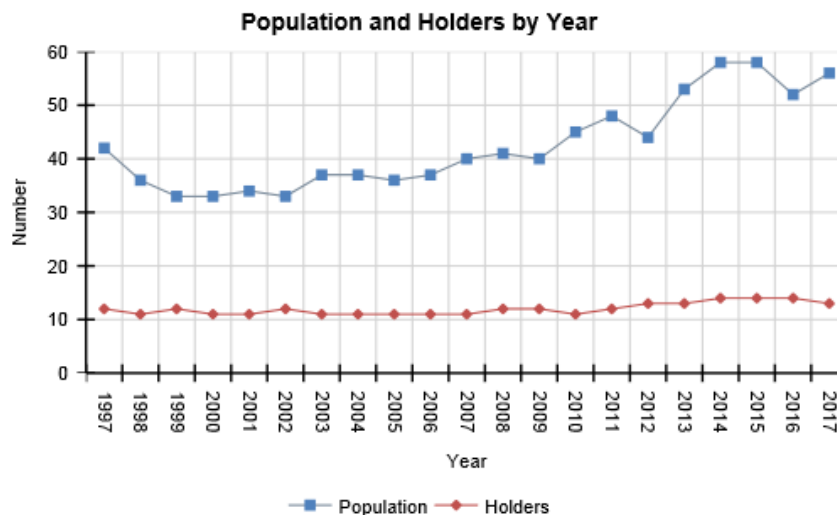
**ASSOCIATION
OF ZOOS
AQUARIUMS &**

Babirusa 2017

- 25.30 animals in 15 institutions
- Yellow SSP - zoo population stable
- Endangered – wild population ↑
- This is the highest the population has been since they were imported in the 1980's
- Births outpacing deaths



Program Leader, Studbook
Joe Forys – Studbook Keeper
Audubon Zoo
jforys@auduboninstitute.org



Chacoan peccary 2017

- 28.36.3 (67) in 13 institutions
- Yellow SSP - zoo population ↑
- Endangered - wild population ↓
- Challenges that affect this program:
 - Additional funding sources needed as are qualified participants
- What can TAG do to help program & improve sustainability?
 - Encourage institutions to ship out collared peccaries and replace them with Chacoan peccaries as well as to provide annual financial support.



Program Leader

- Dennis Meritt
- dmeritt@depaul.edu
- 773.325.4937

Common Warthog 2017

- 62.78 (140) @ 45 institutions
- Yellow SSP – zoo population stable with births/deaths; decreasing overall due to exports out of population
- IUCN status – Least Concern, stable
- Studbook being updated will be published by June 2017.
- **ANIMALS AVAILABLE: New holders needed!**
- **Challenges that adversely affect program:**
 - Inbreeding – lack of unrelated adult animals
 - Some institutions not following breeding/transfer/holding recommendations.
 - Few institutions exporting low MK/ high value animals without consulting SSP coordinator
- **What Institutions can do to help program & improve sustainability?**
 - Import new known genetics!
 - Increase holding capacity when building new or renovating exhibits/holding areas.



- Program Leader
- Lisa Smith
 - Great Plains Zoo
 - lsmith@gpzoo.org
 - (605)367-8313 ext. 119

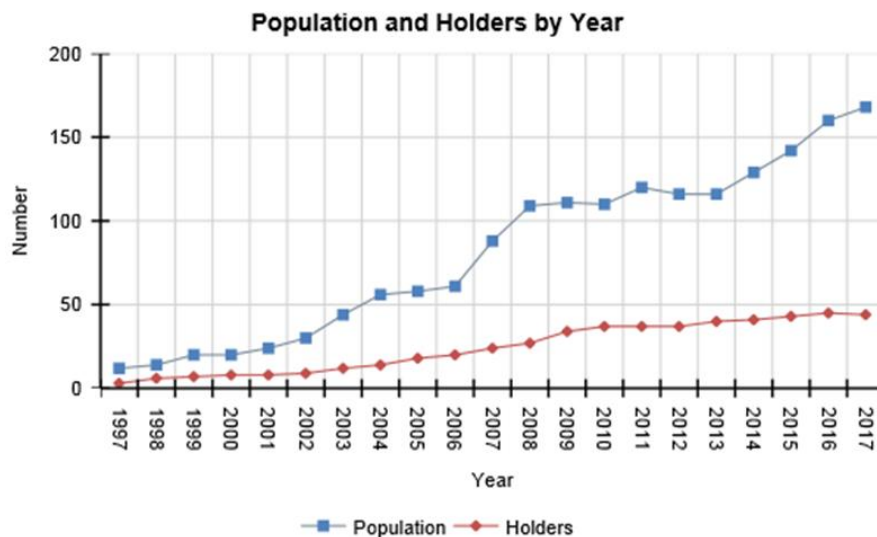
Red river hog 2017

- 106. 108.2 (216) in 48 institutions
- Yellow SSP - zoo population ↑
- Least Concern - wild population ↓
- Red river hogs are taking up valuable space for the more endangered pig and peccary species (Babirusa, Visayan warty pig and Chacoan Peccary)



Program Leaders

- Matt James
Zoo Miami
matt.james@miamidade.gov
(305) 251-0400 ext. 5084943
- Peter Burvenich – Studbook
Rolling Hills Zoo
peter@rollinghillszoo.org



Pygmy Hippopotamus 2017

- 30.56.4(90) in 17 institutions
 - 12 AZA institutions
 - 5 Non-AZA partner institutions
- Red SSP - zoo population slowly ↑
- Endangered – wild population ↓
- Challenges that adversely affect program:
 - Female-biased sex ratio
 - List of 9 pending new institutions with varied new exhibit timelines over the next 3 to 5 years
 - Becoming increasingly difficult to place animals in Non-AZA institutions due to individual institutional policies



Program Leader

- Christie Eddie – Red SSP Coordinator and Studbook Keeper
- Omaha's Henry Doorly Zoo and Aquarium
- christiee@omahazoo.com
- 402-557-6932

River hippopotamus 2017

- 28.52 (80) at 31 institutions
- Yellow SSP - zoo population stable
- Vulnerable - wild population ↓
- Challenges that affect this program:
 - Many institutions hold only female pairs, which limits the number of potential breeding pairs and can make males difficult to place .
 - Current exhibit spaces limit opportunities for successful introductions, breeding and managing male offspring.
- What can TAG do to help program & improve sustainability?
 - Maintain current population size with 3-4 births/year.
 - Consider forming and breeding new pairs within existing spaces.
 - New breeding facilities should be capable of holding at least two adult females per adult male and allow for separation of adult males from females and their offspring.

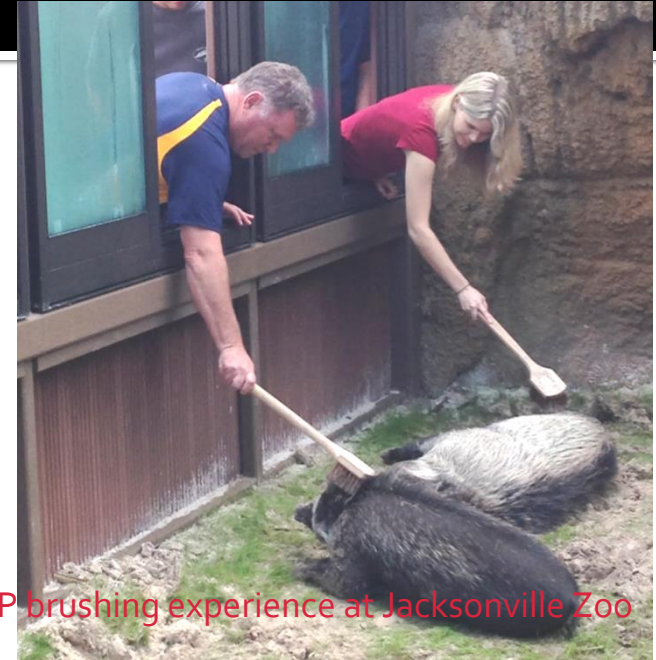


Program Leader

- John Davis
- Riverbanks Zoo
- Jdavis@riverbanks.org
- 803.602-0886

Visayan warty pig 2017

- 36.41 (77) in 18 institutions (16 AZA, 2 non-AZA)
- Yellow SSP - zoo population stable
- Critically Endangered - wild population ↓
- Last Population Plan January 15, 2016
- Studbook update requests coming soon
- Challenges that affect this program:
 - Potential that females are shutting down following relatively short periods of being in non-reproductive situations, though a female at Portland delivered successfully after not being pregnant for ~ 8 years
 - Have had some aggression issues in single sex groups
- What can TAG do to help program & improve sustainability?
 - Still planning to request more support from holders for in-situ conservation projects
- San Diego Zoo has exhibited them with Malayan tapir



VIP brushing experience at Jacksonville Zoo

- Craig Miller – SSP Coordinator & Studbook Keeper
 - Jacksonville Zoo and Gardens
 - miller@c@jaxzoo.org
 - (904) 757-4463 x136

Asian (Malayan) Tapir 2017

- 15.19 (34) in 19 AZA institutions
 - 6.4 (10) CCTU
 - 1.1 (?) Canada
- Red SSP - zoo population = ↓
- Endangered – wild population ↓
- Challenges that adversely affect program:
 - New founder animals needed
 - Additional spaces needed
- What TAG can do to help program & improve sustainability?
 - Encourage institutions to add this species
 - Support education materials
 - *"What is a tapir"*



- Program Leader/Studbook Keeper

Michele Stancer

Utah's Hogle Zoo

mstancer@hoglezoo.org

801-584-4544

Baird's Tapir 2017

- 28.21 (49) North America
 - 17.14 AZA- 18 facilities
 - 11.7 non AZA
- Yellow SSP- zoo population stable
- Endangered – wild population
- Working towards managing as a bi-regional program including populations in Mexico and Central America
- Challenges that adversely affect program:
 - New founder animals needed
 - Additional spaces needed



- Program Leader/ International Studbook Keeper

Carolina Holguin

Africam Safari

cholguin@afRICAMSAFARI.COM

+52(222) 281-7000 x 234