

# Cervid (Deer) TAG

## **Chair- Michelle Hatwood**

General Curator- Audubon Species Survival Center  
(FMASSC)

[mhatwood@auduboninstitute.org](mailto:mhatwood@auduboninstitute.org)

w. 504.398.3153

c. 352.281.0394

## **Vice Chair- Stephen Castillo**

Curator- Disney's Animal Kingdom

[steve.castillo@disney.com](mailto:steve.castillo@disney.com)

w. 407.938.2335

## **Vet advisor- Tracy Clippinger, DVM**

[tlc4allcreatures@hotmail.com](mailto:tlc4allcreatures@hotmail.com)

## **Research & Reproduction advisor-**

### **Buddha Pukazhenth**

Smithsonian's Conservation Biology Institute

[PukazhenthB@si.edu](mailto:PukazhenthB@si.edu)

## **Nutrition advisor- Jaap Wensvoort**

Toronto Zoo

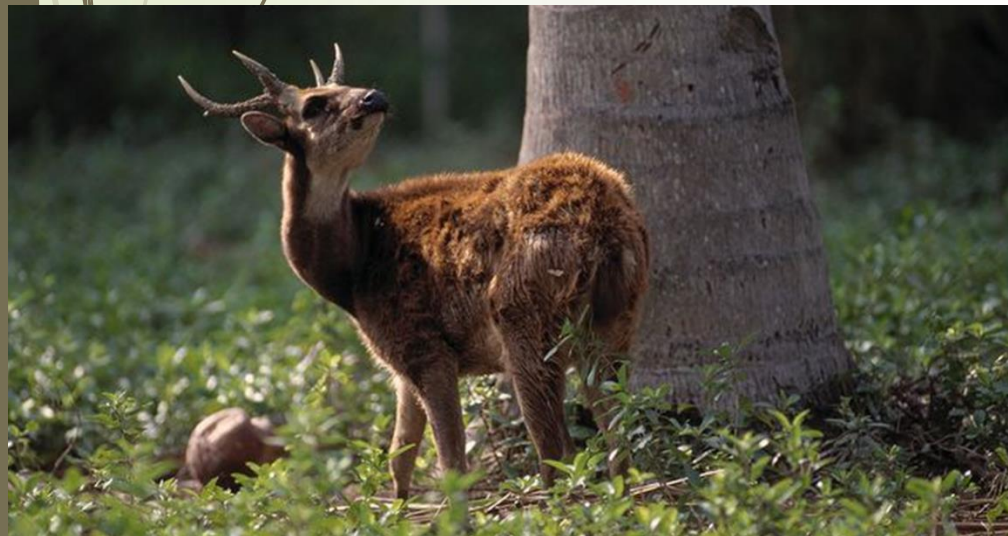
[jwensvoort@torontozoo.ca](mailto:jwensvoort@torontozoo.ca)

## **Education advisors- Brian Ogle**

[Bogle@beaconcollege.edu](mailto:Bogle@beaconcollege.edu)

## **APM Committee Liaison- David Powell**

[dpowell@stlzoo.org](mailto:dpowell@stlzoo.org)



# Cervid (Deer) TAG

## **Chair- Michelle Hatwood**

General Curator- Audubon Species Survival Center  
(FMASSC)

[mhatwood@auduboninstitute.org](mailto:mhatwood@auduboninstitute.org)

w. 504.398.3153

c. 352.281.0394

## **Vice Chair- Stephen Castillo**

Curator- Disney's Animal Kingdom

[steve.castillo@disney.com](mailto:steve.castillo@disney.com)

w. 407.938.2335

## **Steering Committee**

Tony Fisher- Minnesota Zoo

Buddha Pukazhenthil- SCBI

Andrea DeMuth- Brookgreen  
Gardens

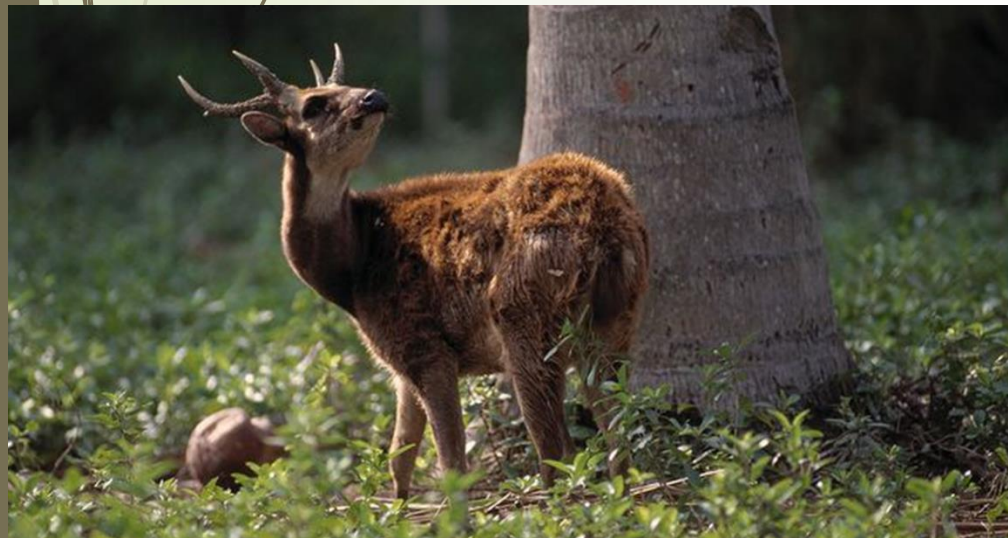
Allison Case- Northwest Trek  
Wildlife

Terry Lincoln- Dakota Zoo

Dan Beetem- The Wilds

Scott Stainback- Caldwell Zoo

A special thank you from the Cervid TAG  
to Randy Rieches, recently retired from  
the San Diego Zoo Safari Park.

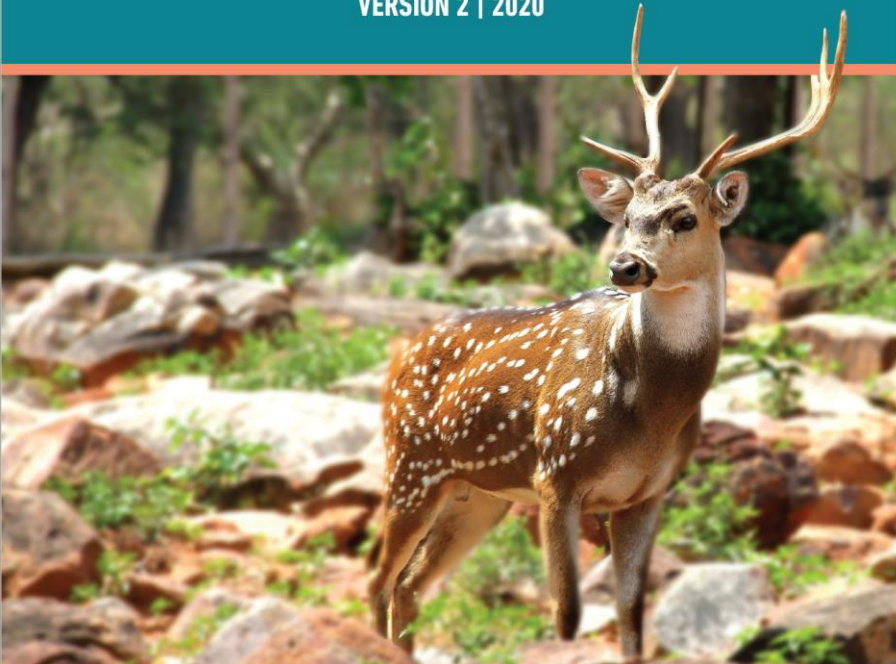


# Publications

## **AN EDUCATOR'S GUIDE TO DEER**

**AN INTERDISCIPLINARY CURRICULUM OVERVIEW**

VERSION 2 | 2020



# Coming Soon!

## Great job!

**TAG Education advisor:  
Brian Ogle**

**Student editor:  
Maxwell Aaronson, Beacon College**

**Graphic Design Co-Collaboration by:  
Brittany Strozzo, Beacon College Instructor  
Sophia Pikus, Beacon College**

# Publications

**Thank you to  
everyone that  
helped put this  
together!**

**Thank you to all the  
facilities that are  
continuing their  
commitments to  
deer**

**CERVID TAXON ADVISORY GROUP  
2020  
REGIONAL COLLECTION PLAN  
Fourth Edition**



**ASSOCIATION  
OF ZOOS &  
AQUARIUMS**




# Survey Results

## **82 facilities responded to the survey**

- 63 of those hold at least one deer species
- 67% of those (42 out of 63) hold at least one TAG program species (based on 2014 RCP)

## **CWD**

- 91% of the responding facilities (75 out of 82) are familiar with CWD import restrictions in their state 
- 30% of the responding facilities (25 out of 82) have CWD restrictions preventing them from moving deer to or from their facility



# Survey Results

## **82 facilities responded to the survey**

- 63 of those hold at least one deer species

## **Husbandry & Exhibits**

- 76% of deer facilities (48 out of 63) have them in a mixed species exhibits
- In the last 5 years, 38% of responding institutions (31 out of 82) have planned to build, or have built, an Asian or S. Am themed exhibit.
  - 81% of those 31 facilities discussed adding hoofstock
    - 4 added a deer species (one was non-program)
    - 7 are planning on adding a species in the near future
    - 5 are undecided
    - 15 have decided not to add deer



# Survey Results

## 82 facilities responded to the survey

- 63 of those hold at least one deer species

## Husbandry & Exhibits

- Greatest husbandry & exhibit challenges
  - Fighting, male aggression, rut
  - Physical space too small or poor enclosure location
  - Flighty animals
  - Lack of management resources, such as holding pens, barns, tamers, etc.
  - Managing genetic diversity due to issues transferring deer

Cervid TAG will putting together  
husbandry management resource guidelines

# Survey Results

82 facilities responded to the survey

- 63 of those hold at least one deer species

## Conservation & Research

- 7% of respondents (6 out of 82) are involved in some type of deer conservation or research. Most are native N. Am. deer projects.
- Priority of TAG to push new (and old) conservation and research initiatives.



Large-antlered muntjac

(c) Leibniz-TZW / SIE / Bidoup Nui Ba NP



# Program Updates

## ➤ YELLOW PROGRAMS

- **Tufted Deer**
  - ❖ Elizabeth Johnson  
Naples Zoo  
ejohnson@napleszoo.org
- ★ **Eld's Deer**
  - ❖ Dolores Reed  
SCBI- Smithsonian  
reedm@si.edu
- **Pere David's Deer**
  - ❖ Beth Schille  
Disney's Animal Kingdom  
beth.schille@disney.com
- **Reeves' Muntjac**
  - ❖ Elana Kopel  
Prospect Park Zoo  
ekopel@wcs.org
- **Barasingha**
  - ❖ Matt Gelvin  
San Diego Zoo Safari Park  
mgelvin@sdzwa.org

## ➤ RED SSP or PROGRAM

- **Southern (Chilean) Pudu**
  - ❖ Craig Gibbs  
Queens Zoo  
cgibbs@wcs.org
- **Greater Malayan Chevrotain**
  - ❖ Hulya Khambatta  
Bronx Zoo  
hkhambatta@wcs.org



Eld's deer- add to your collection plan now!

# Program Updates

## ➤ Registry/Monitored

### ➤ Moose

- ❖ Mike Teller  
Calgary Zoo  
miket@calgaryzoo.com

### ➤ White-lipped Deer

- ❖ Alana Auwae- registry  
Rosamond Gifford Zoo  
AlanaAuwae@ongov.net

### ➤ Bactrian Wapiti

- ❖ Curt Coleman  
the Wilds  
ccoleman@theWilds.org



## ➤ Phase-out

### ➤ Mexican Red Brocket Deer

### ➤ Siberian Musk Deer

Special thank you to Matt Ardaiolo at Denver Zoo for trying to recover this species in its 11<sup>th</sup> hour. He is continuing to monitor the remaining animals and assisting with export plans.



©Brent Huffman, [www.ultimateungulate.com](http://www.ultimateungulate.com)

# What you can you do?

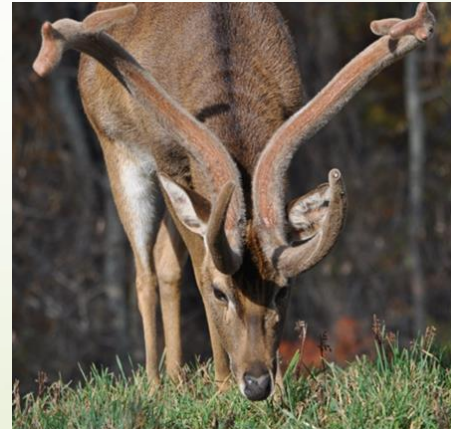
**Add Deer to your  
collection plan!!**

**Support Conservation  
and  
Research Projects**

- ▶ Know your Chronic Wasting Disease State import regulations
- ▶ Talk to your State vet about CWD regulations for exotics
- ▶ Monitor current cervid collection animals for CWD



*Photo credit: Brent Huffman*



*Photo credit: Michelle Hatwood*