

Identifying Conservation Priorities for the Critically Endangered Large-antlered Muntjac (*Muntiacus vuquangensis*) in one of its Last Strongholds

An AZA Conservation Grants Fund Project



Michelle Hatwood
mhatwood@auduboninstitute.org
Cervid TAG Chair

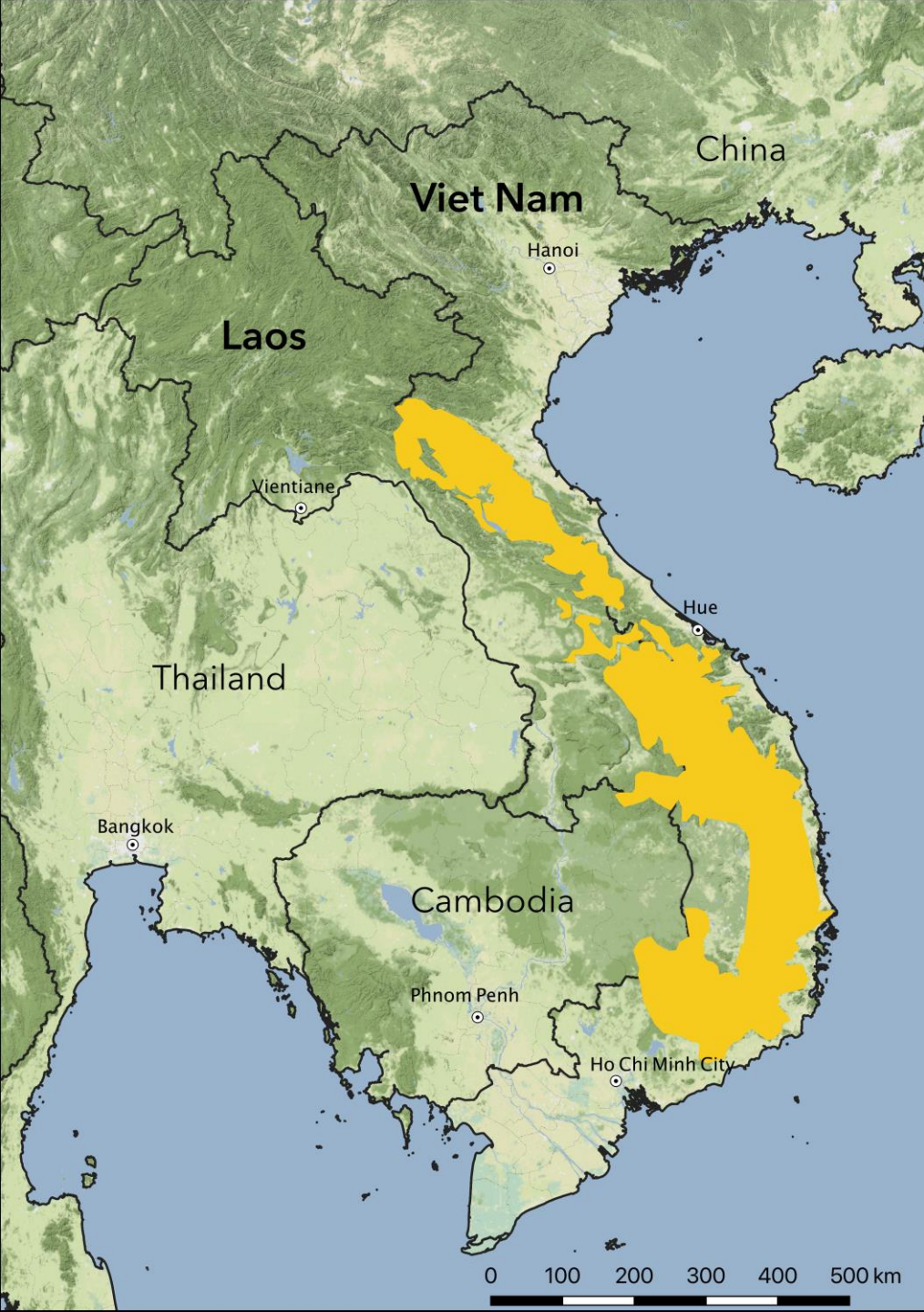
Andrew Tilker
atilker@gmail.com
IUCN Large-antlered Muntjac Working Group coordinator



- Recently discovered by scientific community in 1994
- Rapid decline since its discovery
- Critically endangered

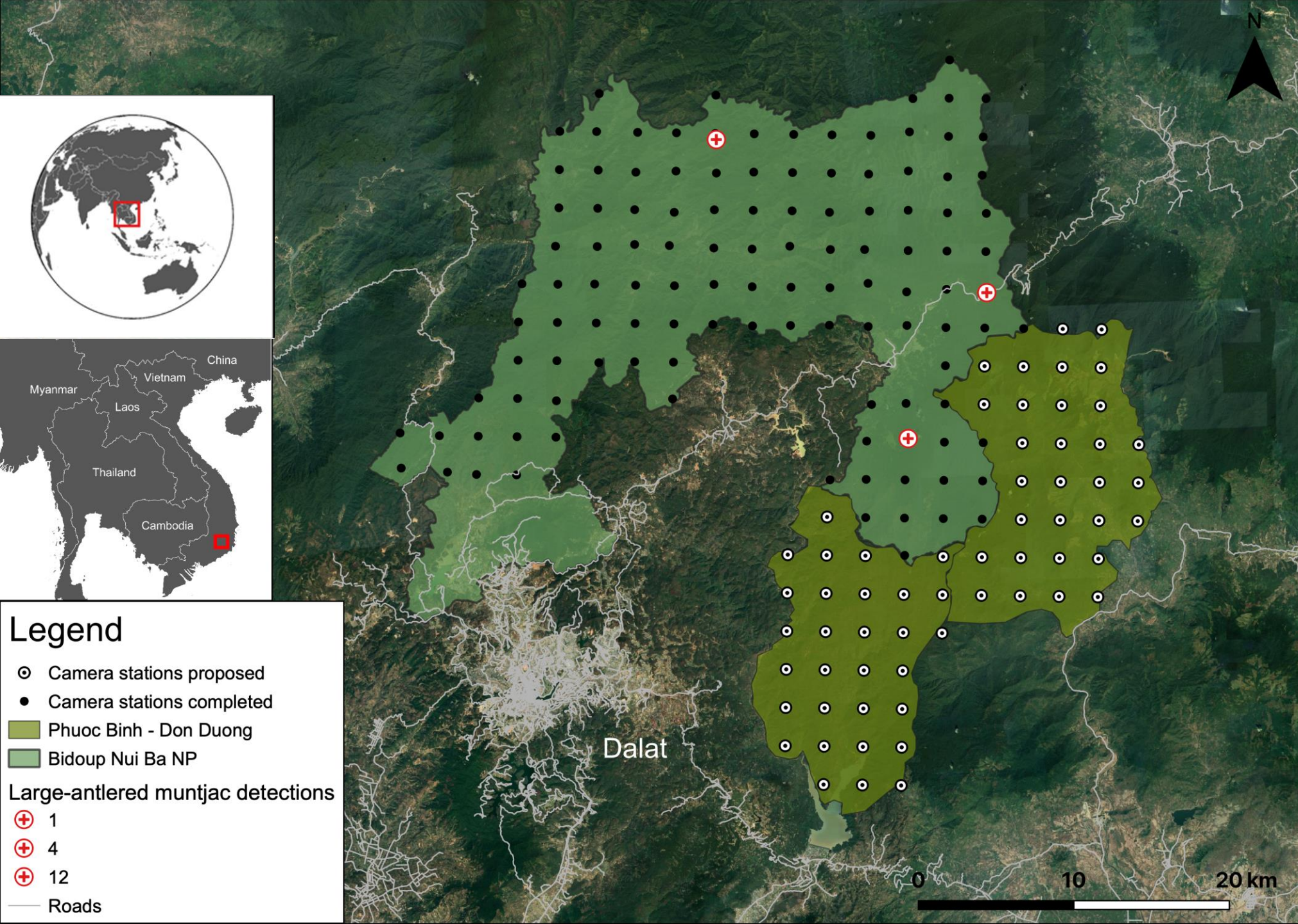
Annamite mountain range





© SWG/WCA/ICBF/DOF/BCC/Khammouane PAFO and DAFO.
HCO ScoutGuard

03.27.2018 06:45:41



1. Bidoup Nui Ba NP
2. Chu Yang Sinh NP
3. Phuoc Binh NP

Legend

- ⊙ Camera stations proposed
- Camera stations completed
- Phuoc Binh - Don Duong
- Bidoup Nui Ba NP

Large-antlered muntjac detections

- ⊕ 1
- ⊕ 4
- ⊕ 12
- Roads

AZA CGF Goals 2021

1. Assessing large-antlered muntjac distribution in Phuoc Binh and Don Duong forests through systematic camera-trapping surveys.



AZA CGF Goals 2021

2. Disseminate large-antlered muntjac distribution data to local conservation stakeholders.



AZA CGF Goals 2021

3. Capacity building for young Vietnamese conservation scientists.
 - Mentor project leader (An Nguyen) in all aspects of survey implementation, data analysis, and stakeholder communication.
 - Build in-country capacity through hands-on training





The Team

- Andrew Tilker- Asian Species officer at Global Wildlife Conservation and coordinator of the IUCN SSC Large-antlered Muntjac Working Group
- An Nguyen- Vietnam Field Coordinator
- Dr. Barney Long- Senior Director of Species Conservation at Global Wildlife Conservation
- Dr. Andreas Wilting (Andi)- scientist at the Leibniz-IZW in the Department of Ecological Dynamics
- Dr. Truong Luu- Director of the Southern Institute of Ecology, part of the Vietnam Academy of Science and Technology, located in Ho Chi Minh City, Vietnam
- Michelle Hatwood- Cervid TAG Chair, general curator Audubon Species Survival Center.

How YOU can Help

- Greatest need is financial support
 - Fund the Website (to be built)
 - Fund ranger supplies
 - Fund in-country capacity building
 - Fund community education
- Only 7% of AZA deer-holding facilities support research or conservation for deer.

Now is your opportunity!



Reeves' muntjac- Franklin Park Zoo

**Reeves' muntjac
holders- you will be
hearing from us soon!**

Contact Michelle Hatwood for more
information or to support this project
Mhatwood@auduboninstitute.org

