

Waterbuck ... get on target with this bull's-eye!

ASSOCIATION
OF ZOOS &
AQUARIUMS
ANTELOPE AND
GIRAFFE TAG



MEASUREMENTS

Length: 5.5-7.5 feet

Height: 4-4.5 feet
at shoulder

Weight: 350-600 lbs



Wet savanna



Africa

IUCN
LEAST
CONCERN

105,000
in the wild

Why exhibit waterbuck?

- Involve visitors by challenging them to explain the purpose of the prominent “bull’s-eye” marking on the rump of waterbuck. Scientists are still debating it!
- Make better use of existing exhibits with unused shallow water features or marshy spaces: waterbuck will wade in muddy areas, adding activity to otherwise “dead” spaces.
- Compare the advantages of the waterbuck’s oily coat with a duck’s waterproof feathers or a rain coat. Scientists are even using the odiferous oil from their coats to develop a tsetse fly repellent for livestock to benefit communities in Africa.
- Celebrate Valentine’s Day every day of the year with the waterbuck’s adorable heart-shaped nose!
- Integrate these large, easy-going, non-territorial antelope into exhibits to boost diversity and provide enrichment for animals and guests alike!

Stewardship Opportunities

Wild Nature Institute/Tarangire Ungulate Observatory
<http://www.wildnatureinstitute.org/tungo.html>

Care and Husbandry

YELLOW SSP: 72.105.13 (190) in 14 AZA institutions (2018)

Species coordinator: Jonnie Capiro, San Diego Zoo Safari Park

jcapiro@sandiegozoo.org

Social nature: Gregarious; herds typically have one male and several females. Some facilities are working with young bachelor herds.

Mixed species: Cohabitate well with numerous species of hoofstock, including giraffe, rhinos, and various antelope, as well as birds. Hybridization risk with other *Kobus* antelope.

Housing: A hardy species. Provide supplemental heat below 45°F. They work well in a swampy area, or with access to a wallow.

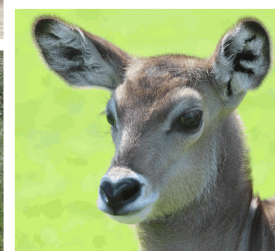
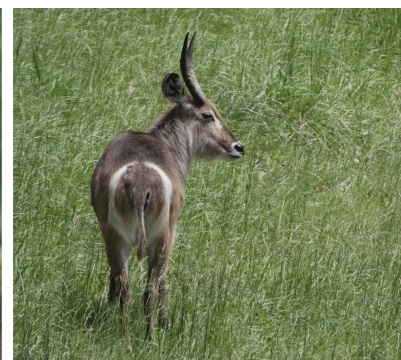
Medical notes: A very robust species. Individuals tend to become nervous when isolated in new surroundings and may need calming drugs.

Special requirements: Waterbuck require constant access to drinking water during hot temperatures. Neonates are “tucked” for their first weeks, and must be provided with hiding spaces.

Keeper resources: Low maintenance. Waterbuck tend to be less flighty than many other antelope, making them great additions to mixed species exhibits.

Please contact the TAG for full husbandry guidelines.

<http://www.azaungulates.org/>



Photos by B. Huffman. Published June 2019.